

WEEKLY BULLETIN ON OUTBREAKS AND OTHER EMERGENCIES

Week 24: 6 - 12 June 2022

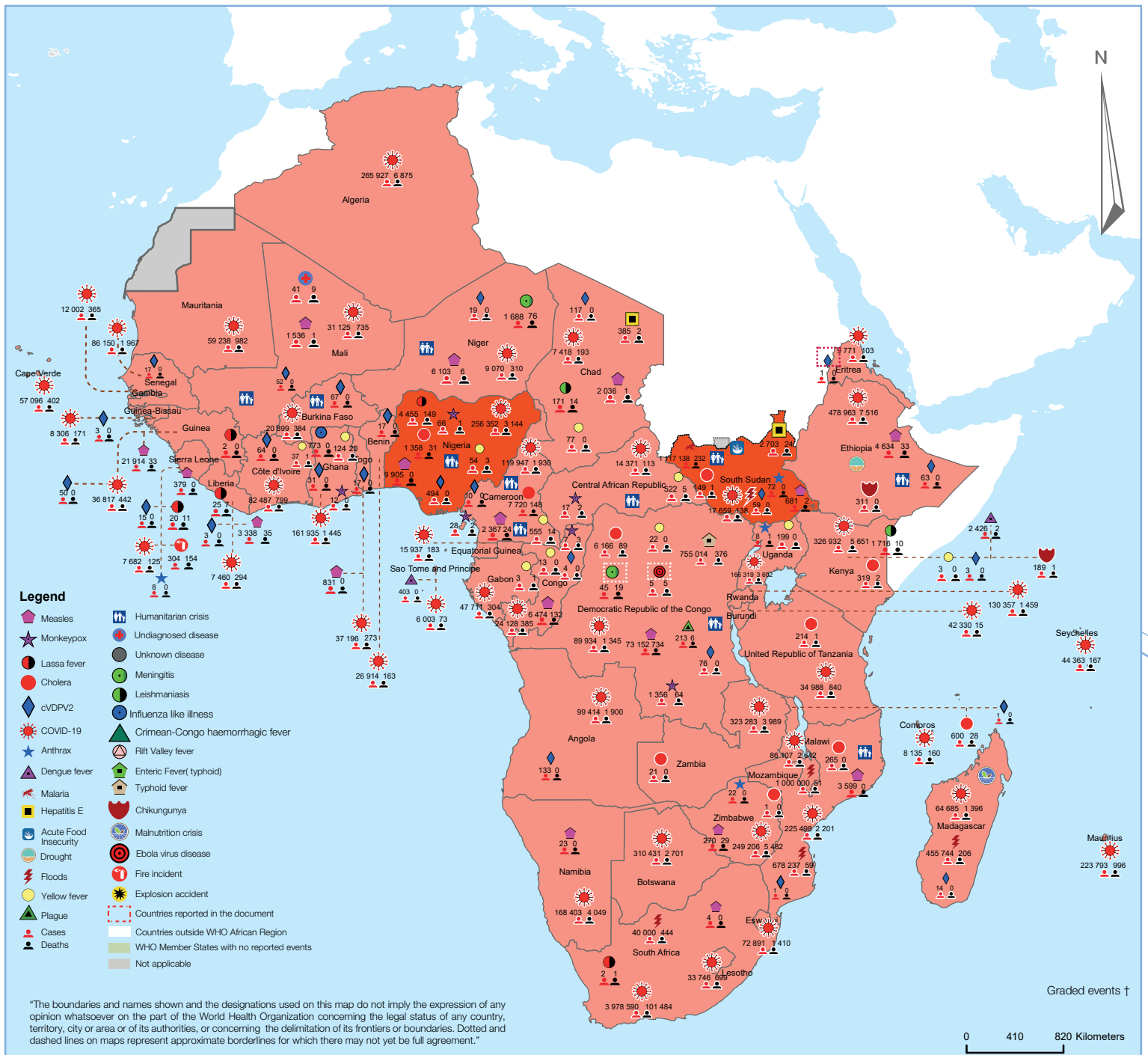
Data as reported by: 17:00; 12 June 2022

5
New events

151
Ongoing events

136
Outbreaks

20
Humanitarian crises



4
Grade 3 events

3
Protracted 3 events

42
Grade 2 events

4
Protracted 2 events

1
Grade 1 events

2
Protracted 1 events

54
Ungraded events

Overview

Contents

1 Overview

2 - 4 Ongoing events

5 All events currently being monitored

This Weekly Bulletin focuses on public health emergencies occurring in the WHO African Region. The WHO Health Emergencies Programme is currently monitoring 156 events in the region. This week's articles cover:

- [Circulating vaccine-derived poliovirus type 2 in Eritrea](#)
- [Ebola Virus Disease in the Democratic Republic of the Congo](#)
- [Meningitis in the Democratic Republic of the Congo](#)

For each of these events, a brief description, followed by public health measures implemented and an interpretation of the situation is provided.

A table is provided at the end of the bulletin with information on all new and ongoing public health events currently being monitored in the region, as well as recent events that have been controlled and closed.

Major issues and challenges include:

- The emergence and spread of circulating vaccine-derived poliovirus type 2 (cVDPV2) in the African region continues, with Eritrea being the latest country to report a case. Results from genomic sequencing, which shows that the current virus isolate is related to the strain detected in July 2020 in Sudan, highlights the continued risk of international spread of the poliovirus. The context of subnational immunity and surveillance gaps across the countries of the horn of Africa, which has been amplified by the effect of the COVID-19 pandemic on the health system, warrants enhanced cross-border collaboration to prevent further spread. The implementation of high-quality vaccination and enhanced surveillance uniformly across all subnational areas will be required to mitigate its impact on the population health.
- Although the current outbreak of Ebola virus disease in the Democratic Republic of the Congo appears to be under control with 22 days of no new cases, the challenges affecting the response, including strike actions staged by local health workers as well as community resistance persist. Efforts are underway to resolve the strike, however, taking stock of these challenges as well as practices employed to control the outbreak will help improve future responses. Identifying the definitive source of this outbreak also remains elusive, and must be pursued as part of preparedness and response measures for subsequent Ebola virus disease outbreaks.

New events

Circulating vaccine-derived poliovirus type 2

Eritrea

1
case

0
Deaths

0%
CFR

EVENT DESCRIPTION

Following laboratory confirmation, the Ministry of Health of Eritrea notified WHO on 3 June 2022 of a case of circulating vaccine-derived poliovirus type 2 (cVDPV2) detected in Barentu, Gash- Barka region. The virus was isolated from an acute flaccid paralysis (AFP) case who had onset of paralysis on 3 September 2021, with no known travel history outside the country. Two stool specimens collected on 8 and 9 September 2021 were shipped and received at the Ethiopian National Polio Laboratory on 24 April 2022. Test results returned on 2 June 2022, confirming the presence of cVDPV2.

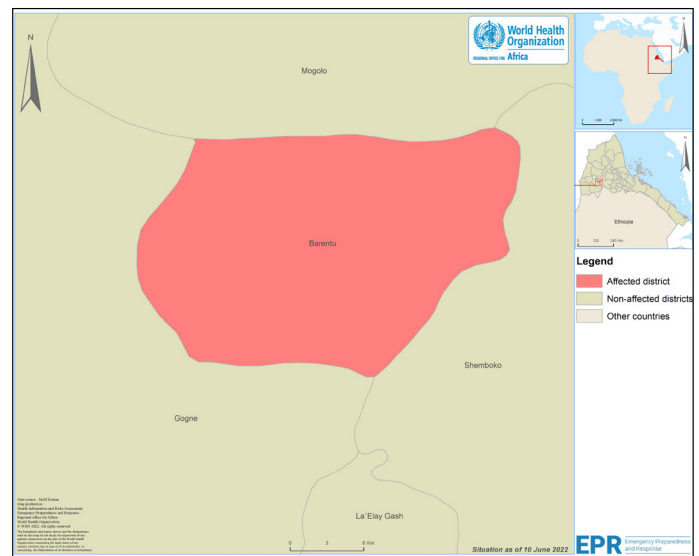
The virus is linked to cVDPV2 detected in July 2020 in Sudan and belongs to the Chad-N'Djamena-1 (CHA-NDJ-1) emergence, originating in Nigeria (via Chad). This is the first report of a case of cVDPV2 in Eritrea. The national public health authorities with support from partners of the Global Polio Eradication Initiative (GPEI), including the African Rapid Response Team (ARRT), have launched a full investigation to identify the extent of circulation and risk associated with the event, and plan appropriate public health response.

The routine national vaccination coverage against poliovirus has been high in the country. According to 2020 WHO-UNICEF coverage estimates, Eritrea had a national immunization coverage of 95% for the third dose of oral poliovirus vaccine (OPV3) and a 97% coverage for the first dose of inactivated polio-containing vaccine (IPV1). National surveillance indicators for polio are also on course, with the annualized national non-polio AFP surveillance rate as of May ending 2022 above the 1 per 100,000 population threshold.



© WHO/AFRO

Circulating vaccine-derived poliovirus type2 in Eritrea, as of 10 June 2022



PUBLIC HEALTH ACTIONS

- The Government of Eritrea has declared the cVDPV2 outbreak as a national public health emergency, in line with temporary recommendations issued by the International Health Regulations (IHR) Emergency Committee on polio.
- The Ministry of Health is coordinating the response to the event with technical and operational support from the GPEI and partners.
- Investigations are ongoing, including the identification of the extent of circulation of the virus and the implementation of targeted response activities.
- Surveillance activities are being reinforced, including an active search of further AFP cases in and around the immediate area of the detected case.

SITUATION INTERPRETATION

Eritrea joins the list of countries in the African region reporting cases of cVDPV2, indicating the potential for the emergence and spread of the virus. Although national immunization coverage is high, this is not uniform across all subnational areas, and this disparity may have been magnified by the ongoing COVID-19 pandemic. A thorough investigation of this outbreak will shed light on the inadequacies and gaps and inform public health response actions. WHO continues to advise countries, territories, and areas to maintain uniformly high routine immunization coverage at the district level to minimize the consequences of any new virus introduction.

Ongoing events

Ebola Virus Disease

Democratic Republic of the Congo

5 cases

5 Deaths

100% CFR

EVENT DESCRIPTION

Almost four weeks have passed without report of a new case of Ebola virus disease (EVD) in the Democratic Republic of the Congo (DRC). The last case was reported on 19 May 2022. As of 12 June 2022, a total of five (four confirmed and one probable) cases of EVD have been reported in the current outbreak in the DRC, with a case fatality ratio of 100%. Three health areas (Libiki, Mama Balako and Motema Pembe) across two health zones (Mbandaka and Wangata) in Equateur Province have been affected so far.

Surveillance activities including investigation of alerts, contact tracing, and testing of suspected cases continue, although suboptimal. Cumulatively, 1 076 contacts have been identified and listed since the beginning of the outbreak. All contacts have completed 21 days of follow-up with no new cases identified among the contacts. As of 12 June 2022, 712 samples have been tested for EVD since the onset of the outbreak, four of which have returned positive for the virus.

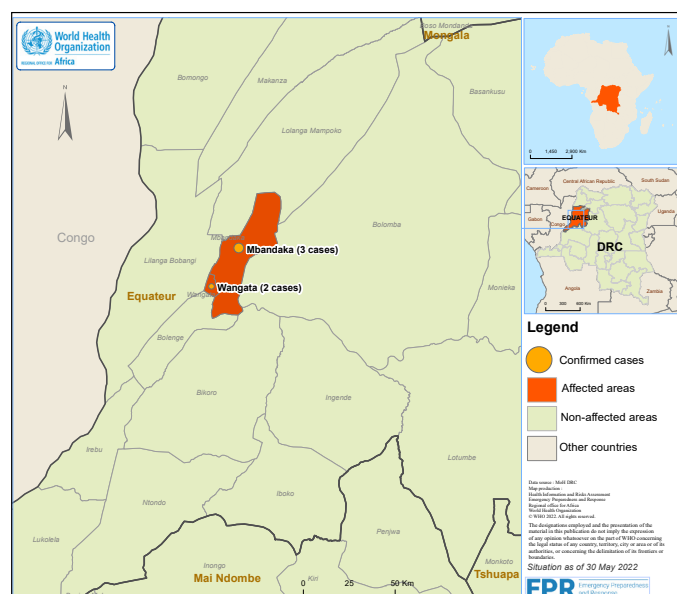
The government has instituted some remedial actions have been taken to address the strike staged by local health worker although full resolution is still pending.

as the strike action from local health care workers is still underway.

PUBLIC HEALTH ACTIONS

- Response activities at the field level continue to be coordinated by the Provincial Health Division with technical and operational support from the national Ministry of Health, WHO, and other partners.
- All remaining 418 contacts completed 21 days of follow-up, with as of 12 June 2022.
- Since the beginning of the outbreak, 528 491 202 (92.9%) of 528 718 travelers registered at the points of entry have been screened for EVD, 225 of whom were suspected of EVD and tested. None were positive.
- As of 12 June 2022, 1 628 persons in the affected health zones have been vaccinated against EVD using the ring strategy targeting contacts and contacts-of-contact. A total of 302 are contacts and 1 326 are contacts-of-contacts. There are 831 frontline health workers among those vaccinated.
- Seventy-five new samples were tested for EVD in the past week, giving a total of 712 samples tested since the onset of the outbreak including four positive cases. A total of 1 103 GeneXpert cartridges remain in stock across the country, with 214 available at the laboratory in Mbandaka City.
- Other activities continue to be undertaken on ground, including IPC interventions in health care facilities and the community, psycho-social support, and RCCE actions to boost contact tracing and vaccination activities.

Location of confirmed cases of Ebola virus disease in Equateur Province, Democratic Republic of the Congo, as of 12 June 2022



SITUATION INTERPRETATION

The current outbreak of EVD in the Democratic Republic of Congo appears to be under control, with no new cases reported for close to four weeks. However, the response has been challenged by strike actions from local health workers and resistance from community members. Public health response tools, including vaccines deployed in the early stage of the outbreak by the government with support from WHO and partners may have helped to nip the outbreak in its bud. Resolution of strike actions as well as addressing community resistance for optimal uptake of public health measures remains critical and must be pursued. Efforts should be directed at learning from this response to improve response to future outbreak of EVD.



A partial view of 68 new motorcycles handed over by WHO to strengthen epidemiological surveillance activities in Mbandaka

[Go to overview](#)

3

[Go to map of the outbreaks](#)

EVENT DESCRIPTION

The head of the Akpandau health area alerted the Gombari health zone management team regarding successive deaths of four adult patients (two men and two women) of unknown cause on 25 May 2022.

The four patients were residents of Konzokonvu village, in Apodo health area, Gombari health zone, Haut Uele Province in Democratic Republic of the Congo (DRC).

A field mission to the affected area conducted by the local health team on 27 May 2022 confirmed the reported community alerts. A total of 11 suspected cases with seven deaths were identified with signs and symptoms of fever, severe headache, convulsions, physical asthenia, diarrhea and vomiting. The average duration between the onset of symptoms and death without treatment was between 12 to 24 hours.

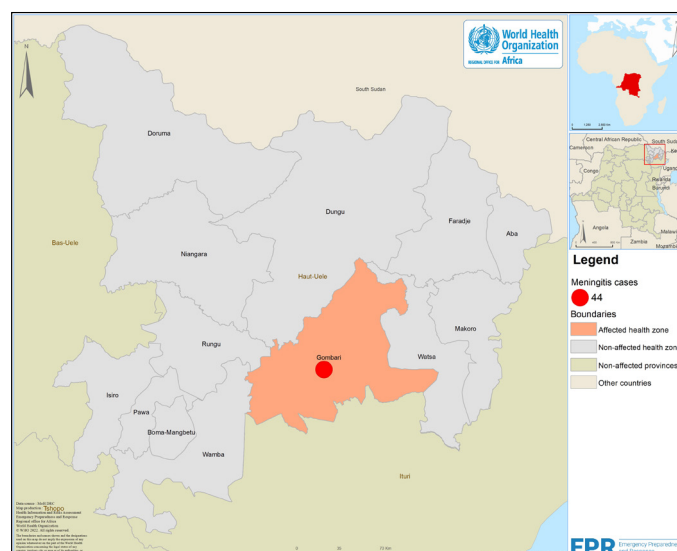
Culture results of cerebrospinal fluid (CSF) samples obtained from three cases on 30 May 2022 showed gram-negative coccobacillus suggestive of *Haemophilus influenzae*. Further analysis of one sample sent to the National Institute of Biomedical Research in Kinshasa (INRB-Kinshasa), detected *Neisseria Meningitidis* type C through Polymerase Chain Reaction (PCR) testing. Additional samples are being collected for testing.

Preliminary investigations indicated that the outbreak started on 20 May 2022 when the first case was reported in Konzokonvu village, Apodo health area, Gombari health zone. As of 7 June 2022, a total of 44 cases and 18 deaths (case fatality ratio 40.9%) have been reported. Of the 44 cases reported, 12 are admitted and undergoing treatment, while 14 have recovered. The most affected age group is 30-49 years (31.8%), followed by 5-14 years old (20.5%). Women are the most affected, constituting 54.5% (n=24) of the cases.



© WHO/AFRO

Distribution of Meningitis cases in Gombari Health Zone, Uele Haut Province, Democratic Republic of the Congo, as of 7 June 2022



PUBLIC HEALTH ACTIONS

- The Provincial and District health departments are mobilizing health partners operating in the Haut Uele province to set up a coordination committee for the response.
- A rapid response team was deployed to the affected area to investigate the event and initiate response activities.
- A total of 5 000 doses of ceftriaxone have been delivered to the affected area for management of cases in line with the WHO recommended protocol. The patients currently admitted are undergoing clinical care.
- Four CSF samples have been sent to the National Institute of Biomedical Research in Kinshasa (INRB-Kinshasa) for analysis, one of them arrived and tested positive for *Neisseria Meningitidis* type C through Polymerase Chain Reaction (PCR) testing. An additional five CSF samples are being shipped to Kinshasa as well.
- Risk communication activities are ongoing in the affected communities.

SITUATION INTERPRETATION

The affected area is part of sub-Saharan Africa's meningitis belt, with outbreaks reported frequently. The high case fatality reported in the current outbreak is concerning and follows similar trend observed in the previous years. Mass population movement in the affected areas, facilitated by nomadic herders and mining activities, can potentially lead to spread of the disease and escalate the outbreak. Health authorities will need to collect additional samples to confirm the outbreak and implement rapid public health measures to prevent further spread. Surveillance strengthening, including active case finding and reinforced risk communication activities should be prioritized.

All events currently being monitored by WHO AFRO

Country	Event	Grade	Date notified to WCO	Start of reporting period	End of reporting period	Total cases	Cases Confirmed	Deaths	CFR
New Events									
Eritrea	Poliomyelitis (cVDPV2)	Ungraded	2-Jun-2022	7-Jun-2022	13-Jun-2022	1	1	0	0.0%
see article above									
Ghana	Influenza A (H3N2)	Ungraded	9-Jun-2022	1-Jan-22	8-Jun-2022	773	773	0	0.0%
An outbreak of influenza A (H3N2) is occurring in Ghana with 773 cases confirmed out of 3 460 samples tested since early June 2022. Most of the cases have been reported from Eastern (33.1%), Greater Accra (29.5%), and Volta (11.9%) regions.									
Ghana	Monkeypox	Ungraded	8-Jun-2022	24-May-2022	8-Jun-2022	12	5	0	0.0%
Ghana joins the list of countries reporting monkeypox infection among humans in the African region. On 8 June 2022, the country reported five confirmed cases detected out of 12 suspected cases sampled between 24 May and 8 June 2022. The cases were reported from the Eastern, Western, and Greater Accra regions.									
Namibia	Measles	Ungraded	2-Jun-2022	4-Apr-2022	16-May-2022	23	5	0	0.0%
The Ministry of Health of Namibia notified WHO on 2 June 2022, of a confirmed outbreak of measles in the Outapi district, Omusati region. So far, a total of 23 suspected case with five IgM-positive have been reported. The district lies on the border with Angola and measles immunization rates remain suboptimal.									
South Africa	Measles	Ungraded		6-Jun-2022	6-Jun-2022	4	4	0	0.0%
Four individuals have been confirmed for measles by the National Institute for Communicable Diseases. All cases detected reside in Gauteng province, three in Tshwane and one in West Rand. All cases are isolated and recovering.									
Ongoing Events									
Algeria	COVID-19	Grade 3	25-Feb-2020	25-Feb-2020	12-Jun-2022	265 927	265 927	6 875	2.6%
From 25 February 2020 to 12 June 2022, a total of 265 927 confirmed cases of COVID-19 with 6 875 deaths (CFR 2.6%) have been reported from Algeria. A total of 178 437 cases have recovered.									
Angola	COVID-19	Grade 3	21-Mar-20	21-Mar-20	8-May-2022	99 414	99 414	1 900	1.9%
The first COVID-19 confirmed case was reported in Angola on 21 March 2020. As of 8 May 2022, a total of 99 414 confirmed COVID-19 cases have been reported in the country with 1 900 deaths and 97 441 recoveries.									
Angola	Poliomyelitis (cVDPV2)	Grade 2	8-May-2019	1-Jan-19	24-Apr-2022	133	133	0	0.0%
No case of circulating vaccine-derived poliovirus type 2 (cVDPV2) was reported this week. There were 3 cases reported in 2020. The total number of cases reported in 2019 remains 138. These cases are from several outbreaks which occurred in 2019.									
Benin	COVID-19	Grade 3	17-Mar-20	16-Mar-20	29-May-2022	26 914	26 914	163	0.6%
The Ministry of Health in Benin announced the first confirmed case of COVID-19 on 16 March 2020. As of 29 May 2022, a total of 26 914 cases have been reported in the country with 163 deaths and 26 558 recoveries.									
Benin	Poliomyelitis (cVDPV2)	Grade 2	8-Aug-2019	8-Aug-2019	8-Jun-2022	14	14	0	0.0%
No new cases of circulating vaccine-derived poliovirus type 2 (cVDPV2) were reported this week. Six cases were reported in 2021 and 2020, and 8 in 2019. These cases are all linked to the Jigawa outbreak in Nigeria.									
Botswana	COVID-19	Grade 3	30-Mar-20	28-Mar-20	9-Jun-2022	310 431	310 431	2 701	0.9%
On 30 March 2020, the Minister of Health and Wellness in Botswana reported three confirmed cases of COVID-19. As of 9 June 2022, a total of 310 431 confirmed COVID-19 cases were reported in the country including 2 710 deaths and 304 887 recovered cases.									
Burkina Faso	Humanitarian crisis	Grade 2	1-Jan-19	1-Jan-19	9-Jun-2022	-	-	-	-
Since 2015, the security situation in the Sahel and East of Burkina Faso has gradually deteriorated as a result of attacks by armed groups. This has resulted in a current mass displacement of 1 850 293 internally displaced persons as of 30 April 2022. There have been IDPs from all 13 regions, however, the majority have come from Centre-Nord (35.9%) and Sahel (31.7%) regions. More than 50 people were killed in an attack by a non-state armed group on 25 May 2022 while trying to flee Madioali commune (Est region). Armed groups have blockaded the area since February 2022 and residents cannot move freely. In April 2022, there were an increased use of improvised explosive devices (IEDs) along the main access routes in North centre and the encirclement of Djibo, the second largest city in the Sahel region. According to OCHA, 3.5 million Burkinabe will need humanitarian aid in 2022, including 2.6 million severely food insecure during the 2022 lean season, with over 436 000 in the pre-famine phase. Access to health services remain a challenge for the population in affected areas. There is a total of 179 non functional health facilities and 353 facilities that function at a minimum level of their capacity.									
Burkina Faso	COVID-19	Grade 3	10-Mar-20	9-Mar-20	1-May-2022	20 899	20 899	384	1.8%
Between 9 March 2020 and 1 May 2022, a total of 20 899 confirmed cases of COVID-19 with 384 deaths and 20 497 recoveries have been reported from Burkina Faso.									
Burkina Faso	Poliomyelitis (cVDPV2)	Grade 2	1-Jan-20	1-Jan-20	8-Jun-2022	67	67	0	0.0%
No new cases of circulating vaccine-derived poliovirus type 2 were reported this week. There were two cases reported in 2021, and 65 in 2020. The country is affected by different outbreaks, one linked to the Jigawa outbreak in Nigeria and one to the Savanes outbreak in Togo.									

Country	Event	Grade	Date notified to WCO	Start of reporting period	End of reporting period	Total cases	Cases Confirmed	Deaths	CFR
Burundi	COVID-19	Grade 3	31-Mar-20	18-Mar-20	11-Jun-2022	42 330	42 330	15	0.0%
On 31 March 2020, the Minister of Health in Burundi reported the first two confirmed cases of COVID-19. As of 11 June 2022, the total number of confirmed COVID-19 cases is 42 330, including 15 deaths and 42 162 recovered.									
Cameroon	Humanitarian crisis (Far North, North, Adamawa & East)	Protracted 2	31-Dec-2013	27-Jun-2017	11-May-2022	-	-	-	-
According to UNHCR and OCHA reports, an estimated 1 942 054 people need assistance, 357 631 people are internally displaced and 135 257 people are returnees, as of 30 April 2022.									
Cameroon	Humanitarian crisis (NW & SW)	Protracted 2	1-Oct-16	27-Jun-2018	11-May-2022	-	-	-	-
According to UNHCR reports, an estimated 579 136 Internally Displaced People (IDPs) have been registered as of 30 April 2022. Targeted attacks on various groups such as traditional leaders, school staff, students, and humanitarian workers are still being reported. Schools resumed session, but teachers and students are still facing attacks. There has been an increase in the use of improvised explosive devices (IEDs), carjacking, and clashes between security forces and NSAGs, leading to civilian population displacement. In addition, there are 478 066 refugees, of whom nearly 345 622 (72.3%) arrived from Central African Republic.									
Cameroon	Cholera	Grade 2	1-Jan-21	25-Oct-21	2-Jun-2022	7 720	537	148	1.9%
From 25 Oct 2021 to 22 May 2022, a total of 7 720 suspected cases of cholera including 537 confirmed by culture and 148 deaths (CFR 1.9%) have been reported in Cameroon, from South-West (5 258 cases, 84 deaths; CFR 1.6%), Littoral (2 101 cases, 57 deaths; CFR 2.7%), South (182 cases, two deaths; CFR 1.1%), Centre (130 cases, four deaths; CFR 3.2%), Far-North (8 cases, no death), and North (26 cases, one death; CFR 3.8%) regions. In addition, on 20 May 2022, the Mifi district in the West region of the country started reporting new cases, with 15 cases and no death recorded so far. The outbreak is currently active in four regions (Centre, Littoral, South-West and West) and 15 districts, out of the 30 that have already reported a suspected cholera case since October 2021. Cases are aged between 2 months and 99 years with a median age of 27 years. Females are twice less affected than males (M/F sex ratio = 2:1).									
Cameroon	COVID-19	Grade 3	6-Mar-20	6-Mar-20	11-May-2022	119 947	119 947	1 930	1.6%
The Cameroon Ministry of Health announced the confirmation of the first COVID-19 case on 6 March 2020. As of 11 May 2022, a total of 119 947 cases have been reported, including 1 930 deaths and 117 980 recoveries.									
Cameroon	Measles	Ungraded	2-Apr-2019	1-Jan-22	8-May-2022	2 367	1 170	24	1.0%
From week 1 to week 18, 2022 (ending 8 May), through Integrated disease surveillance and response (IDSR) reporting, a total of 2 367 measles cases and 1 170 confirmed (49.4%) with 24 deaths (CFR 1.0%) have been reported in Cameroon. Of the total reported cases, 1 686 were investigated (71.2%). The following are the regions and health districts where measles outbreak has been declared in 2022 : Adamaoua (Ngaoundal, Tibati); Centre (Akonolinga, Biyem Assi, Djoungolo, Mbalmayo, Mfou, Nkolindongo, Yokou); East (Belabo, Bertoua); Far-North (Mada, Makary, Roua, Hina); Littoral (Bangue, Boko, Cité des Palmiers, Deido, Edea, Logbaba, New Bell, Nylon, Bonas Sama); North (Gashiga, Guider, Pitoa, Poli); North-West (Ako); West (Bangourain, Massangam); South (Ebolowa, Lolodorf, Sangmelima, Olamze,)									
Cameroon	Monkeypox	Ungraded	24-Feb-2022	1-Jan-22	2-Jun-2022	28	3	2	7.1%
Cameroon has reported 28 suspected cases with two deaths from four districts across three regions since the beginning of 2022. Three cases have been laboratory-confirmed from Kumba Health District in the South-West (2) and Ayos Health District in the Centre Region (1).									
Cameroon	Poliomyelitis (cVDPV2)	Grade 2	1-Jan-20	1-Jan-20	10-Jun-2022	10	10	0	0.0%
No case of circulating vaccine-derived poliovirus type 2 (cVDPV2) was reported during epi week 22, 2022. There are three cases reported in 2021 and seven cases in 2020. No case has yet been reported for 2022									
Cameroon	Yellow fever	Grade 2	7-Feb-2021	4-Jan-21	2-Jun-2022	555	3	14	2.5%
From 1 January 2022 to 22 May 2022, a total of 555 suspected cases of yellow fever were investigated including 25 probable cases (tested IgM positive) and three confirmed cases (tested positive by plaque reduction neutralization test). Fourteen deaths were recorded, giving a CFR of 2.5%. All ten regions of the country notified suspected cases; the 3 confirmed cases are from Adamawa (Ngaoundere Urbain health district) and West (Foumbot and Malantouen health districts) regions of the country.									
Cape Verde	COVID-19	Grade 3	19-Mar-20	18-Mar-20	11-Jun-2022	57 096	57 096	402	0.7%
The first COVID-19 confirmed case was reported in Cape Verde on 19 March 2020. As of 11 June 2022, a total of 57 096 confirmed COVID-19 cases including 402 deaths and 56 137 recoveries were reported in the country.									
Central African Republic	Humanitarian crisis	Protracted 2	11-Dec-2013	11-Dec-2013	5-May-2022	-	-	-	-
According to OCHA figures, 3.1 million people (63% of the total population) are in need of assistance and protection in 2022. There are 649 794 people that are internally displaced as of 31 Mar 2022 mostly hosted in Ouaka, Ouham-Pende, Basse-Kotto, and Ouham Prefectures. There are also 738K persons who are refugees in neighbouring countries. Civilians are still the main victims of violence. Food insecurity is also estimated to affect 2.2 million (45% of the total population) people in 2022.									
Central African Republic	COVID-19	Grade 3	14-Mar-20	14-Mar-20	16-May-2022	14 371	14 371	113	0.8%
The Ministry of Health and population announced the confirmation of the first COVID-19 case in Central African Republic on 14 March 2020. As of 16 May 2022, a total of 14 371 confirmed cases, 113 deaths and 14 210 recovered were reported.									
Central African Republic	Monkeypox	Ungraded	3-Mar-22	4-Mar-22	23-May-2022	17	8	2	11.8%
As of 19 May 2022, Central African Republic has so far recorded 17 suspected cases of monkey pox including eight confirmed cases and two deaths (CFR 11.8%), for year 2022. The confirmed cases were reported from three health districts: Mbaïki (six cases, two deaths), Alindao (one case, no death) and Bimbo (one case, no death).									

Country	Event	Grade	Date notified to WCO	Start of reporting period	End of reporting period	Total cases	Cases Confirmed	Deaths	CFR
Central African Republic	Yellow fever	Grade 2	14-Sep-21	1-Apr-2021	23-May-2022	522	23	5	1.0%
On 3 August 2021, an 18-month-old girl from Mala village in the Kemo district, Central African Republic, tested positive for yellow fever by plaque reduction neutralization test (PRNT) at the Centre Pasteur of Cameroun. As of 8 May 2022, a total of 522 suspected cases of yellow fever have been reported from three regions and six health districts of the country, including five deaths (CFR 1.0%). Of the 391 suspected cases investigated, 23 tested positive to yellow fever by PRNT and 1 tested positive by PCR. A reactive campaign is planned on 8-12 June 2022.									
Chad	COVID-19	Grade 3	19-Mar-20	19-Mar-20	6-Jun-2022	7 418	7 418	193	2.6%
The first COVID-19 confirmed case was reported in Chad on 19 March 2020. As of 6 June 2022, a total of 7 418 confirmed COVID-19 cases were reported in the country including 193 deaths.									
Chad	Leishmaniasis	Ungraded	8-Sep-20	16-Oct-20	31-Jan-22	171	15	14	8.2%
Since 1 January 2018, a total of 171 cases have been reported by 4 provinces (N'Djamena, Borkou, Tibesti and Ouaddai) and 14 deaths (CFR 8.2%). For the year 2020 the country registered 74 cases including 4 deaths. Since the beginning of 2021 up to 30 November 2021, 54 cases have been reported including 8 deaths (CFR 14.8%). From 1 December 2021 to 31 January 2022, 10 new cases have been reported with no death.									
Chad	Measles	Ungraded	24-May-2018	1-Jan-22	8-May-2022	2 036	51	1	0.0%
From week 1 to week 18, 2022(ending 8 May), a total of 2 036 suspected cases of measles, 51 confirmed and one death (0.05%) reported from 110 out of 139 districts. A total of 22 other districts are suspected in outbreak (more than five reported cases/month); Due to lack of test kits in country, a total of 250 specimens were shipped to Cameroon (Centre Pasteur Yaoundé) for testing and the results are awaited.									
Chad	Poliomyelitis (cVDPV2)	Grade 2	18-Oct-19	9-Sep-19	10-Jun-2022	117	117	0	0.0%
No new cases of circulating vaccine-derived poliovirus type 2 (cVDPV2) were reported during epi week 22, 2022. Three cases have already been reported since the beginning of 2022. No cases were however reported in 2021. There were 106 cVDPV2 cases reported in 2020 from three different outbreaks. There were 9 cases reported in 2019. The risk of further cVDPV2 spread across the Lake Chad subregion remains high. The number of cases reported in 2019 has been revised from 8 to 9.									
Chad	Yellow fever	Grade 2	13-Nov-21	1-Nov-21	10-Apr-2022	77	35	0	0.0%
On 13 November 2021, the Institut Pasteur in Dakar shared the results of 17 samples of yellow fever cases from the Mandoul district, Chad, of which two tested positive by polymerase chain reaction (PCR), six were IgM positive with cross-reactions with other flaviviruses, and six other IgM positive without cross-reactions. As of 10 April 2022, a total of 77 yellow fever IgM positive cases were reported from seven provinces (Mandoul, Guéra, Mayo Kebbi Ouest, Moyen Chari, and le Lac), including nine confirmed cases by PCR and 26 by plaque reduction neutralization test.									
Comoros	COVID-19	Grade 3	30-Apr-2020	30-Apr-2020	11-Jun-2022	8 135	8 135	160	2.0%
The first case of confirmed COVID-19 was notified on 30 April 2020 in Comoros. As of 11th June 2022, a total of 8 135 confirmed COVID-19 cases, including 160 deaths and 7 969 recoveries were reported in the country.									
Congo	COVID-19	Grade 3	14-Mar-20	14-Mar-20	29-May-2022	24 128	24 128	385	-
The Government of Congo announced the confirmation of the first case of COVID-19 in Congo on 14 March 2020. As of 29 May 2022, a total of 24 128 cases including 385 deaths and 23 644 recovered cases have been reported in the country.									
Congo	Measles	Ungraded	14-Mar-22	1-Jan-22	15-May-2022	6 474	6 474	132	2.0%
From week 1 to week 19, 2022 (ending 15 May); a total of 198 lab confirmed measles cases and 6 276 cases confirmed through Epi-linkage are reported; 21 health districts in nine departments are having outbreaks. Outbreak response vaccination planned in integration with yellow fever preventive mass vaccination campaign. All 12 departments for the country to be reached with the planned measles vaccination campaign									
Congo	Monkeypox	Ungraded	23-May-2022	1-Jan-22	30-May-2022	7	2	3	42.9%
Since the beginning of 2022, seven suspected cases with three deaths have been reported from Impfondo District in the country's northern department of Likouala on the border with the Democratic Republic of Congo and Central Africa. Samples from two cases sent to the National Institute of Biomedical Research (INRB) Laboratory in Kinshasa on 12 April 2022 were laboratory-confirmed.									
Congo	Poliomyelitis (cVDPV2)	Grade 2		29-Jan-21	8-Jun-2022	4	4	0	0.0%
No case of circulating vaccine-derived poliovirus type 2 (cVDPV2) was reported during epi week 22, 2022. There were two cases reported in 2021 and two cases also reported in 2020									
Congo	Yellow fever	Ungraded	31-Mar-22	31-Mar-22	1-Jun-2022	13	4	0	0.0%
In Congo, since 2021 to 1 June 2022, a total of 13 probable cases of yellow fever including four confirmed and zero death among confirmed cases have been reported. The figures have been reviewed following final cases classification. An integrated campaign for yellow fever and measles is planned. Measles vaccines are expected by 8 June 2022, with a tentative launch of an integrated campaign on 30 June 2022									
Côte d'Ivoire	COVID-19	Grade 3	11-Mar-20	11-Mar-20	12-Jun-2022	82 487	82 487	799	1.0%
Since 11 March 2020, a total of 82 487 confirmed cases of COVID-19 have been reported from Côte d'Ivoire including 799 deaths, and a total of 81 581 recoveries.									
Côte d'Ivoire	Poliomyelitis (cVDPV2)	Grade 2	29-Oct-19	29-Oct-19	4-May-2022	64	64	0	0.0%
No case of circulating vaccine-derived poliovirus type 2 (cVDPV2) was reported this week. There are no reported cases in 2021. There are 64 cases reported in 2020.									
Côte d'Ivoire	Yellow fever	Grade 2	14-Sep-21	13-Aug-2021	19-May-2022	37	7	1	2.7%
From 13 August 2021 as of 19 May 2022, a total of 30 probable and 7 confirmed cases of yellow fever were recorded in Côte d'Ivoire.									

Country	Event	Grade	Date notified to WCO	Start of reporting period	End of reporting period	Total cases	Cases Confirmed	Deaths	CFR
Democratic Republic of the Congo	Humanitarian crisis	Protracted 3	20-Dec-2016	17-Apr-2017	22-May-2022	-	-	-	-
<p>In the DRC, humanitarian partners reported at least 126 incidents affecting humanitarian access between January and March 2022, including 38 (30%) in North Kivu province, 32 (25%) in Tanganyika, 24 (19%) in South Kivu province, 19 (15%) in Ituri. About 37% of incidents reported between Jan-March 2022 quarter related to violence against humanitarian personnel, property and facilities and 22% of reported incidents are related to armed conflict. In addition, 7 health care facilities have been either destroyed or damaged since the beginning of 2022. In North Kivu province, clashes between the Congolese army and suspected M23 fighters have been observed since May 19, 2022 in the territories of Rutshuru and Nyiragongo. As a result, the fighting has displaced at least 61 000 people, according to humanitarian sources. Humanitarian needs continue to increase: access to water, food, shelter, health care and other basic necessities remains very limited.</p>									
Democratic Republic of the Congo	Cholera	Grade 3	16-Jan-15	1-Jan-22	22-May-2022	6 166	-	89	1.4%
<p>In 2022, from epidemiological week 1 to 20 (ending 22 May 2022), 6 166 suspected cholera cases including 89 deaths (CFR: 1.4%) were recorded in 54 health zones across 11 provinces of the Democratic Republic of the Congo. Response measures are being implemented in the main active hot spots including a vaccination campaign.</p>									
Democratic Republic of the Congo	COVID-19	Grade 3	10-Mar-20	10-Mar-20	5-Jun-2022	89 934	89 932	1 345	1.5%
<p>Since the start of the COVID-19 outbreak, declared on 10 March 2020, a total of 89 932 confirmed cases and two probable case, including 1 345 deaths have been reported. A total of 82 562 people have recovered.</p>									
Democratic Republic of the Congo	Ebola virus disease	Grade 2	22-Apr-2022	22-Apr-2022	5-Jun-2022	5	4	5	100.0%
<p>The ongoing Ebola virus disease (EVD) outbreak in the Democratic Republic of the Congo (DRC) has spread out to a new Health Zone with a new confirmed case reported on 19 May 2022 in Mama Balako Health Area, Wangata Health Zone in Mbandaka City, Equateur Province. Two Health Zones (Mbandaka and Wangata) and three Health areas are now affected (Libiki, Motema Pembe for Mbandaka Health Zone and Mama Balako for Wangata health Zone). As of 5 June 2022, a total of five cases including four confirmed cases and one probable case with five deaths (case fatality ratio (CFR)= 100 %) are reported.</p>									
Democratic Republic of the Congo	Measles	Ungraded	12-Oct-21	1-Jan-22	22-May-2022	73 152	4 890	734	1.0%
<p>From week 1 to week 20 of 2022 (ending 22 May) , 73 152 suspected cases and 734 measles related deaths (CFR 1.0%) are reported ; 2 992 cases investigated through the case based surveillance system; 1 268 tested IgM+ for Measles and 630 tested IgM+ for Rubella; 63% laboratory confirmed measles cases are less than 5 years of age with only 25% of that category with history of vaccination; a total of 110 health districts out of 519 for the country with confirmed epidemics since the beginning of the year</p>									
Democratic Republic of the Congo	Monkeypox	Ungraded	30-Mar-19	1-Jan-22	22-May-2022	1 356	10	64	4.7%
<p>From 1 January – 22 May 2022, the Democratic Republic of the Congo has reported 1 356 suspected cases with 64 deaths (CFR 4.7%) from 91 health zones across 19 provinces. The most affected provinces account for 77% of the total cases reported in 2022: Sankuru (n=481, 35.5%), Maniema (181; 13.3%), Tshopo (169 cases, or 12.5%), Tshuapa (111; 8.2%), and Sud-Ubangi (105 cases or 7.7%). At least 10 of the cases sampled were confirmed positive for monkeypox virus infection.</p>									
Democratic Republic of the Congo	Plague	Ungraded	12-Mar-19	1-Jan-22	22-May-2022	213	-	6	2.8%
<p>Between epidemiological weeks 1-21 of 2022, 213 cases of suspected bubonic plague have been reported with 6 deaths (2.8% CFR). All cases have been reported from Ituri Province from the Rethy sanitation zone from six sanitation areas: Lokpa, Rethy, Gudjo, Rassia, Uketha, and Kpadroma. The Lokpa sanitation area has reported the majority of suspected cases (180, 84.5%) in 2022. Cases are up by more than 100% from the same period in 2021, when a total of 110 were suspected including 13 deaths (11.8% CFR). This increase is a consequence of the intensification of active search for cases in the community as part of a collaborative response to the plague epidemic.</p>									
Democratic Republic of the Congo	Poliomyelitis (cVDPV2)	Grade 2	26-Feb-2021	1-Jan-21	8-Jun-2022	76	76	0	0.0%
<p>No case of circulating vaccine-derived poliovirus type 2 (cVDPV2) was reported this week. The number of 2022 cases stand at 48. There were 28 cases in 2021.</p>									
Democratic Republic of the Congo	Suspected Meningitis	Ungraded	31-May-2022	31-May-2022	9-Jun-2022	45	3	19	42.2%
<p>The head of the Akpandau health area sent an alert to the Gombari health zone team on Wednesday 25 May 2022 reporting the successive deaths of four adult patients (two men and two women) of unknown cause, all the four patients were residents of the Konzokonvu village, in Apodo health area. The clinical picture presented by all patients was suggestive of meningitis. Culture of cerebrospinal fluid (CSF) samples taken on 30 May 2022 from three patients showed Gram negative coccobacillus, suggestive of Haemophilus Influezae. Other samples are being sent to the National Reference Laboratory in Kinshasa (INRB-Kinshasa) for more analysis and one sample tested positive for Neisseria Meningitidis. As of 9 June 2022, a total of 45 cases and 19 deaths (CFR 42.2%) have been reported with 40 cases reported from Apodo health area ,one case from Kossia health area, two cases from Akpandau health area and two cases from Tangi health area. More samples are still needed for testing in order to confirm the outbreak and detect the predominant germ for vaccination</p>									

Country	Event	Grade	Date notified to WCO	Start of reporting period	End of reporting period	Total cases	Cases Confirmed	Deaths	CFR
Democratic Republic of the Congo	Typhoid fever	Ungraded	1-Jul-2021	1-Jan-22	22-May-2022	755 014	-	376	0.0%
In 2022, from epidemiological week 1 to 20 (ending 22 May 2022), 755 014 suspected cases of typhoid fever including 376 deaths were recorded in the Democratic Republic of the Congo. In 2021, from Epi week 1 to 49, 1 380 955 suspected cases of typhoid fever have been reported including 502 deaths (CFR 0.03%).									
Democratic Republic of the Congo	Yellow Fever	Grade 2	21-Apr-2021	21-Apr-2021	19-May-2022	22	10	0	0.0%
Since 2021 to 19 May 2022, Democratic Republic of the Congo (DRC) has reported a total of 22 probable cases of yellow fever with 10 confirmed									
Equatorial Guinea	COVID-19	Grade 3	14-Mar-20	14-Mar-20	9-Jun-2022	15 937	15 937	183	1.1%
The Ministry of Health and Welfare announced the first confirmed COVID-19 case on 14 March 2020. As of 9 June 2022, a total of 15 937 cases have been reported in the country with 183 deaths and 15 711 recoveries.									
Eritrea	COVID-19	Grade 3	21-Mar-20	21-Mar-20	12-Jun-2022	9 771	9 771	103	1.1%
The first COVID-19 confirmed case was reported in Eritrea on 21 March 2020. As of 12 June 2022, a total of 9 771 confirmed COVID-19 cases with 103 deaths were reported in the country. A total of 9 663 patients have recovered from the disease.									
Eswatini	COVID-19	Grade 3	13-Mar-20	13-Mar-20	12-Jun-2022	72 891	72 891	1 410	1.9%
The first case of COVID-19 was confirmed in the kingdom of Eswatini on 13 March 2020. As of 12 June 2022, a total of 72 891 cases have been reported in the country including 71 333 recoveries. A total of 1 410 associated deaths have been reported.									
Ethiopia	Drought/food insecurity	Grade 2	17-Feb-2022	1-Jan-22	11-May-2022	-	-	-	-
Ethiopia is experiencing a prolonged drought after three consecutive failed rainy seasons since late 2020 affecting nearly 8 million people living in Oromia, SNNP (Southern Nations, Nationalities, and Peoples), Southwest and Somali: several areas in southern and southeastern Ethiopia, including in the regions of Somali (10 zones), Oromia (8 zones), Southwest (1 zone) and SNNP (7 zones). More than 286 000 people have been displaced in search of water, pasture or assistance, fleeing their homes to survive as crops, livestock and livelihoods are wiped out. The number of livestock deaths has reached a staggering 1.46 million (67% in Somali, 31% in Oromia, and 7% in Southwest and SNNP regions) and is still increasing.									
Ethiopia	Humanitarian crisis (Conflict in Tigray)	Grade 3	4-Nov-20	4-Nov-20	23-May-2022	-	-	-	-
The humanitarian situation in Northern Ethiopia remain fragile and unpredictable, affecting civilians and limiting humanitarian aid deliverance. More than 3.9 million people are in need and 2.4 million people are displaced as of 1 Apr 2022. In Afar, 22 districts are affected by the ongoing active conflict with more than more than 300K newly displaced. The corridor for cargo by land has been opened and more than 20 trucks have delivered and food and nutrition supplies. The worsening malnutrition situation in Tigray region and parts of Afar and Amhara continue to be of concern.									
Ethiopia	COVID-19	Grade 3	13-Mar-20	13-Mar-20	12-Jun-2022	478 963	478 963	7 516	1.6%
Since the confirmation of the first case on 21 March 2020, Ethiopia has confirmed a total of 478 963 cases of COVID-19 as of 12 June 2022, with 7 516 deaths and 456 719 recoveries.									
Ethiopia	Measles	Ungraded	14-Jan-17	1-Jan-22	15-May-2022	4 634	2 897	33	0.7%
As of week 19, 2022 (ending 15 May), seven districts (E Gojjam, N Shewa, S Omo, Afder, Fafan, Jarar, and Liben) from three regions (Amhara, SNNPR and Somali) are experiencing an active measles outbreak. From week 1 to 19 of 2022 , a total of 4 634 suspected cases with 2 987 confirmed and 33 deaths (CFR 0.7%) have been reported in Ethiopia									
Ethiopia	Poliomyelitis (cVDPV2)	Grade 2	24-Jun-2019	20-May-2019	10-Jun-2022	63	63	0	0.0%
No case of circulating vaccine-derived poliovirus type 2 (cVDPV2) was reported this week. Ten cases were reported in 2021. The total number of cases for 2020 is 38 and 2019 is 15.									
Gabon	COVID-19	Grade 3	12-Mar-20	12-Mar-20	8-Jun-2022	47 711	47 711	304	0.6%
On 12 March 2020, the Ministry of Health announced the confirmation of the first COVID-19 case in the country. As of 8 June 2022, a total of 47 711 cases including 304 deaths and 47 322 recoveries have been reported in the country.									
Gabon	Yellow fever	Ungraded	12-Feb-2022	17-Sep-21	23-May-2022	3	1	1	33.3%
On 24 January 2022, a case of yellow fever tested positive by seroneutralization at the Institut Pasteur in Dakar. The patient was a 42-year-old male from the Ogooué-Maritime province in Gabon. He was reportedly not vaccinated against yellow fever. He presented with jaundice on 17 September 2021 and died on 23 September 2021 in Port Gentil. Two other probable cases have been recorded, as of 7 May 2022.									
Gambia	COVID-19	Grade 3	17-Mar-20	17-Mar-20	19-May-2022	12 002	12 002	365	3.0%
The first COVID-19 confirmed case was reported in the Gambia on 17 March 2020. As of 19 May 2022, a total of 12 002 confirmed COVID-19 cases including 365 deaths, and 11 634 recoveries have been reported in the country.									
Ghana	COVID-19	Grade 3	12-Mar-20	12-Mar-20	4-Jun-2022	161 935	161 935	1 445	0.9%
As of 4 June 2022, a total of 161 935 confirmed COVID-19 cases have been reported in Ghana. There have been 1 445 deaths and 160 089 recoveries reported.									
Ghana	Poliomyelitis (cVDPV2)	Grade 2	9-Jul-2019	8-Jul-2019	24-Apr-2022	31	31	0	0.0%
No cases have been reported in 2022 nor 2021, 12 cases were reported in 2020, and 19 were reported in 2019.									

Country	Event	Grade	Date notified to WCO	Start of reporting period	End of reporting period	Total cases	Cases Confirmed	Deaths	CFR
Ghana	Yellow fever	Grade 2	3-Nov-21	15-Oct-21	19-May-2022	124	60	20	16.1%
From 15 October 2021, suspected cases of yellow fever were reported mostly among nomadic settlers in the Savannah Region, northwest Ghana (bordering Côte d'Ivoire). As of 19 May 2022, a total of 64 probable and 60 confirmed cases of yellow fever were reported from 13 regions in Ghana.									
Guinea	COVID-19	Grade 3	13-Mar-20	13-Mar-20	29-May-2022	36 817	36 817	442	1.2%
The Ministry of Health in Guinea announced the first confirmed case of COVID-19 on 13 March 2020. As of 29 May 2022, a total of 36 817 cases including 36 206 recovered cases and 442 deaths have been reported in the country.									
Guinea	Lassa fever	Ungraded	22-Apr-2022	20-Apr-2022	12-Jun-2022	2	2	0	0.0%
On 22 April 2022, the Ministry of Health of Guinea declared an outbreak of Lassa fever after a case was confirmed by PCR at the Gueckedou haemorrhagic fever laboratory. The case is a 17-year-old girl from the sub-prefecture of Kassandou located 65 kilometers from the capital of the prefecture of Guéckédou. An additional confirmed Lassa fever confirmed case without any known epidemiological link with the first case was notified on 28 April in Tekoulo sub-province, Gueckedou province.									
Guinea	Measles	Ungraded	09-May-2018	1-Jan-22	27-May-2022	21 914	397	33	0.2%
Since the beginning of 2022 up to week 21 (ending 27 May), a total of 21 194 measles suspected cases with 397 confirmed and 33 death (CFR 0.2 %) have been reported in Guinea from 29 health districts including the capital city Conakry through Integrated disease surveillance and response (IDSR)									
Guinea	Poliomyelitis (cVDPV2)	Grade 2	22-Jul-2020	22-Jul-2020	8-Jun-2022	50	50	0	0.0%
No new cases of circulating vaccine-derived poliovirus type 2 (cVDPV2) were reported this week. So far, we have 6 cases reported in 2021. The total number of 2020 cases has been corrected to 44.									
Guinea-Bissau	COVID-19	Grade 3	25-Mar-20	25-Mar-20	9-Jun-2022	8 306	8 306	171	2.1%
On 25 March 2020, the Ministry of Health of Guinea Bissau reported the first COVID-19 confirmed case in the country. As of 9 June 2022, the country has reported 8 306 confirmed cases of COVID-19 with 8 076 recoveries and 171 deaths.									
Guinea-Bissau	Poliomyelitis (cVDPV2)	Grade 2	9-Nov-21	9-Nov-21	24-Apr-2022	3	3	0	0.0%
No case of circulating vaccine-derived poliovirus type 2 (cVDPV2) was reported this week. Three cases were reported in 2021 which were linked to the Jigawa outbreak in Nigeria.									
Horn of Africa	Drought/food insecurity	Grade 3	20-May-2022	20-May-2022	20-May-2022				
The Horn of Africa is experiencing one of the harshest droughts in living memory, with more than 15 million people facing high levels of acute food insecurity and severe water shortages across the region. The number could reach 20 million if the current below-average rains fail. The crisis threatens not only lives but people's way of life. About 5.7 million children are acutely malnourished, while over three million livestock -- which pastoralist families rely on for sustenance and livelihoods -- have died.									
Kenya	Chikungunya	Ungraded	3-Mar-22	13-Feb-2022	5-Jun-2022	189	5	1	0.5%
Chikungunya outbreak has been reported in Wajir County, Tarbaj sub county in Kutulo village. A total of one hundred and eighty nine (189) cases have been reported with five confirmed cases and one death (CFR 0.5%). No new cases was reported in the last week (week 22, ending 5 June 2022).									
Kenya	Cholera	Ungraded	30-May-2022	3-May-2022	31-May-2022	319	2	2	0.6%
Cholera outbreak is ongoing in Kenya affecting three counties: Nairobi, Kisumu and Kiambu. As of 31 May 2022, a total of 319 cases with two confirmed by culture and two deaths (CFR 0.6%) have been reported. Kisumu has reported more cases (311), followed by Nairobi (7) and Kiambu (1). Response activities are ongoing to control the outbreak									
Kenya	COVID-19	Grade 3	13-Mar-20	13-Mar-20	12-Jun-2022	326 932	326 932	5 651	1.7%
On 12 March 2020, the Ministry of Health announced the confirmation of one new COVID-19 case in the country. As of 12 June 2022, 326 932 confirmed COVID-19 cases including 5 651 deaths and 319 519 recoveries have been reported in the country.									
Kenya	Dengue	Ungraded	3-Mar-22	1-Jan-21	28-Apr-2022	2 426	68	2	0.1%
The outbreak has been reported in two Counties, Mombasa, Mander and Garissa. The cases are spread from 2021 for Mander and Mombasa Counties. In Mander the reported cases are from Mander east sub county while in Mombasa, six-subcounties (Nyali, Mvita, Kisauni, Nyali, Liikoni and Jomvu) have been affected. Garissa County has reported the latest outbreak from Fafi sub county, Hagadera camp. A total of 2 426 cases (68 confirmed through Polymerase Chain Reaction and 2 358 Probable cases) with two deaths (CFR 0.1%) have been reported.									
Kenya	Leishmaniasis	Ungraded	31-Mar-19	3-Jan-20	5-Jun-2022	1 716	1 531	10	0.6%
Since January 2020, a total of 1 716 visceral leishmaniasis confirmed and suspected cases with ten deaths (CFR 0.6 %), have been reported in eight counties namely: Marsabit, Garissa, Kitui, Baringo, West Pokot, Mander, Wajir and Tharaka Nithi. The outbreak is active in three counties, Kitui, West Pokot and Wajir. A total of 19 new cases were reported in the last week (week 22, ending 5 June 2022)									
Kenya	Yellow fever	Grade 2	3-Mar-22	12-Jan-22	1-Jun-2022	3	3	0	0.0%
On 4 March 2022, Kenya declared an outbreak of yellow fever in Isiolo County. As of 15 March 2022, there are a total of 53 suspect cases of yellow fever including six deaths reported from 12 January to 15 March 2022 in 11 wards of Isiolo county. Of the suspected cases, three were confirmed by PCR at the Kenya Medical Research Institute (KEMRI). Epidemiological investigations are ongoing.									
Lesotho	COVID-19	Grade 3	13-May-2020	13-May-2020	7-Jun-2022	33 746	33 746	699	2.1%
Since the first confirmed COVID-19 case was reported in Lesotho on 13 May 2020, until 7 June 2022, a total of 33 746 cases of COVID-19 have been reported, including 25 009 recoveries and 699 deaths.									
Liberia	COVID-19	Grade 3	16-Mar-20	16-Mar-20	9-Jun-2022	7 460	7 460	294	3.9%
From 16 March 2020 to 9 June 2022, Liberia has recorded a total of 7 460 cases including 294 deaths and 7 162 recoveries have been reported.									

Country	Event	Grade	Date notified to WCO	Start of reporting period	End of reporting period	Total cases	Cases Confirmed	Deaths	CFR
Liberia	Lassa Fever	Ungraded	3-Mar-22	6-Jan-22	8-Jun-2022	25	25	7	28.0%
Since the beginning of 2022 up to 8 June 2022, a total of 70 suspected cases of Lassa fever including 25 confirmed and 7 deaths (CFR 28%) have been reported in Liberia. Two Counties are currently in an outbreak: Grand Bassa and Bong Counties.									
Liberia	Measles	Ungraded	3-Feb-2022	1-Jan-22	22-May-2022	3 338	3 027	35	1.0%
As of 22 May 2022, 3 338 suspected cases, including 3 027 confirmed and 35 deaths (CFR: 1 %) were reported from 47 health districts in 14 counties. Of the confirmed cases, 9% (287 cases) were laboratory confirmed, 15% (448 cases) were clinically confirmed, and 76% (2 292 cases) by epidemiological link. Montserrado county is the most affected with 56% (1 861 suspected cases) of all suspected cases reported. The median age of the affected population is 5 years (range: 1 month-67 years). Measles vaccination coverage in confirmed cases is 43% and the vaccination status of 10 % of confirmed is unknown.									
Liberia	Poliomyelitis (cVDPV2)	Grade 2	10-Dec-2020	17-Dec-2020	24-Apr-2022	3	3	0	0.0%
No case of circulating vaccine-derived poliovirus type 2 (cVDPV2) was reported this week. The country reported 3 cases in 2021.									
Madagascar	Floods	Grade 2	19-Jan-22	16-Jan-22	27-Apr-2022	455 744		206	0.0%
Heavy rains in Madagascar from multiple weather systems (Tropical Storm (TS) Ana, Cyclone Batsirai, TS Dumako, Cyclone Emnati, TS Gombe, and TS Jasmine) have flooded parts of the country. The TS Ana weather system affected the country during week 3 of 2022, Cyclone Batsirai occurred in week 5, TS Dumako in week 7, Cyclone Emnati in week 8, TS Gombe in week 10, and TS Jasmine in week 16. As of 8 June 2022, there have been 571 000 victims affected including 214 deaths by the six tropical cyclones: Ana, Batsari, Dumako, Emnati, Gombe and Jasmine in 18 regions though Analamanga area was most affected. Health risk identified: Malaria, diarrhoeal diseases, plague, malnutrition, VPD, COVID 19. With increase in malaria cases since week 17; In week 20, 19/114 districts in 4 regions were in epidemic phase and 21/114 were in alert phase in 2 regions. A total of 172,000 persons displaced by the effects of these Cyclones.									
Madagascar	Malnutrition crisis	Grade 2	1-Jul-2021	1-Jan-21	11-Mar-22	-	-	-	-
A prolonged three-year drought in southern Madagascar has contributed to food insecurity issues for an estimated 1.3 million people in the Grand Sud area, of which 14 000 people were classified as IPC Phase 5 or catastrophically food insecure. The Integrated food security Phase Classification (IPC) analysis for January 2022 has classified 405 000 people in emergency (phase 4). About 309 000 children are projected to suffer from moderate acute malnutrition and 60 000 children aged of 6-59 months are projected to suffer from severe acute malnutrition. There are at least 470 000 people in urgent need of food assistance in Vatovavy, Fitovinany, and Atsimo Atsinanana regions according to the latest estimate established by the authorities after the passage of Cyclones Batsirai and Emnati. Food insecurity and malnutrition improved in the first quarter of 2022 following a large scale-up in humanitarian assistance. No district will be in Emergency (IPC phase 4) from May to November 2022. However, the situation remains fragile with 7/10 districts in crisis (IPC phase 3). Food insecurity has risen in the Grand Sud Est following TCs Batsirai and Emnati, with 5/6 districts in phase 3 and 67,000 people estimated to face Emergency food insecurity (Phase 4) from April to August 2022.									
Madagascar	COVID-19	Grade 3	20-Mar-20	20-Mar-20	4-Jun-2022	64 685	64 685	1 396	2.2%
Madagascar Ministry of Health announced the confirmation of the first COVID-19 case on 20 March 2020. As of 4 June 2022, a total of 64 685 confirmed cases including 1 396 deaths have been reported in the country.									
Madagascar	Poliomyelitis (cVDPV1)	Grade 2	28-Apr-2021	28-Apr-2021	4-May-2022	14	14	0	0.0%
No case of circulating vaccine-derived poliovirus type 1 (cVDPV1) was reported this week. The number of 2021 cases remains 13. There is one case in 2022.									
Malawi	Floods	Grade 2	26-Jan-22	26-Jan-22	18-Mar-22	1 000 000		51	0.0%
Malawi is currently responding to the aftermath of the cyclone Ana and Gombe that occurred on 28 January 2022 and 13 March 2022 respectively. The disaster displaced a number of households, damaged household property, injuries as well as damage to infrastructure and caused several deaths in the southern part of the country. Approximately, more than 1 million people have been affected, death toll stands at 51 (46 due to tropical storm Ana, 5 due to cyclone Gombe).									
Malawi	Cholera	Ungraded	3-Mar-22	3-Mar-22	12-Jun-2022	600	13	28	4.7%
The Malawian Ministry of Health declared a cholera outbreak on 3 March 2022. This was after a case was identified in a 53-years old businessman, resident of Balaka district. Laboratory results by culture confirmed him positive for Cholera on 3 March 2022. As of 12 June 2022, Malawi has reported a total of 600 cholera cases with 28 deaths from seven districts.									
Malawi	COVID-19	Grade 3	2-Apr-2020	2-Apr-2020	12-Jun-2022	86 107	86 107	2 642	3.10%
On 2 April 2020, the president of Malawi announced the first confirmed cases of COVID-19 in the country. As of 12 June 2022, the country has a total of 86 107 confirmed cases with 2 642 deaths and 82 932 recoveries.									
Malawi	Poliomyelitis	Ungraded	31-Jan-22	1-Feb-2022	30-May-2022	1	1	0	0.0%
One positive case of wild WPV1 was detected in Lilongwe from a patient with the date of onset of paralysis on 19 November 2021 confirmed by the National Institute for Communicable Diseases (NICD) reference laboratory. No other cases have been reported this week. However, response activities including mass polio vaccination campaigns continue.									
Mali	Humanitarian crisis	Protracted 1	n/a	n/a	31-May-2022	-	-	-	-
People in Mali are reeling from the impact of years of conflict, deep poverty, climate shocks and mounting insecurity. In May 2022, 7.5 million people need humanitarian assistance. One Malian out of four (4.8 million people) is currently food insecure because of insecurity and the impacts of climate change. During this year's lean season (June to August), a staggering 1.8 million people will be acutely food insecure. However, the Humanitarian Response Plan for Mali is currently funded at only 11 per cent.									
Mali	COVID-19	Grade 3	25-Mar-20	25-Mar-20	12-Jun-2022	31 125	31 125	735	2.4%
On 25 March 2020, the Ministry of Health of Mali reported the first COVID-19 confirmed cases in the country. As of 12 June 2022, a total of 31 125 confirmed COVID-19 cases have been reported in the country including 735 deaths and 30 276 recoveries.									
Mali	Measles	Ungraded	20-Feb-2018	1-Jan-22	5-Jun-2022	1 536	563	1	0.1%
As of 5 June of 2022, a total of 1 536 suspected cases of measles and 563 confirmed and one death (CFR 0.1) have been reported in Mali through integrated disease surveillance and response (IDSR) system. A total of 37 out of 75 health districts have confirmed measles outbreak, of which 13 health districts have received vaccines for response. The most affected age group is from 0 to 59 months.									

Country	Event	Grade	Date notified to WCO	Start of reporting period	End of reporting period	Total cases	Cases Confirmed	Deaths	CFR
Mali	Poliomyelitis (cVDPV2)	Grade 2	18-Aug-2020	18-Aug-2020	16-Mar-22	52	52	0	0.0%
No case of circulating vaccine-derived poliovirus type 2 (cVDPV2) was reported this week. No cases have been reported in 2021. The total number of cases since 2020 are 52.									
Mali	Undiagnosed disease	Ungraded	14-Mar-22	1-Nov-21	11-May-2022	41		9	22.0%
In Farabougou village, Segou region of Mali, a disease of unknown cause has been reported. The first investigation on this disease was conducted since November last year. In 2022, the first alert about this disease was voiced on 23 February. A total of 41 cases with 9 deaths (CFR 22.0%) have been reported. From 12 to 13 April, the Regional Ministry of Health conducted a mission to the affected area, according to the preliminary information, among cases reported 3 have oedema, 12 have non-specified chronic diseases and 26 had malnutrition. No further details provided so far. The investigation report including laboratory analysis are still awaited. The affected area is highly insecure therefore difficult for access.									
Mauritania	COVID-19	Grade 3	13-Mar-20	13-Mar-20	11-Jun-2022	59 238	59 238	982	1.7%
The government of Mauritania announced its first confirmed COVID-19 case on 13 March 2020. As of 11 June 2022, a total of 59 238 cases including 982 deaths and 58 140 recovered cases have been reported in the country.									
Mauritius	COVID-19	Grade 3	18-Mar-20	18-Mar-20	5/8/2022	223 793	223 793	996	0.4%
The Republic of Mauritius announced the first three positive cases of COVID-19 on 18 March 2020. As of 8 May 2022, a total of 223 793 confirmed COVID-19 cases including 996 deaths have been reported in the country.									
Mozambique	Floods	Grade 2	24-Jan-22	26-Jan-22	12-Mar-22	678 237		59	0.0%
On 11 March 2022, a severe tropical cyclone Gombé made landfall over the coastal area of central Nampula province, with maximum sustained winds up to 190km/h. Figures on people affected and damage following the passage of Cyclone Gombé continues to rise. According to the latest information released by the National Institute for Disaster Management and Risk Reduction (INGD), to date Gombé has affected 478 237 people (93 497 families), caused 59 deaths, and injured 82 people. These figures on the impact are expected to rise as widespread damage has occurred though in-depth assessments have not yet taken place. This cyclone Gombé follows tropical storm Ana which hit the country in January, and tropical depression Dumako which struck in February. Together, these previous storms have already affected more than 200 000 people in Nampula, Zambezia and Tete provinces.									
Mozambique	Humanitarian crisis in Cabo Delgado	Protracted 2	1-Jan-20	1-Jan-20	31-Mar-22	-	-	-	-
The safety situation in Cabo Delgado remains unpredictable and volatile. As of 31 Mar 2022, the nationwide estimate of people in need of humanitarian assistance is 622 108 and 266 246 people are displaced by conflict.									
Mozambique	Cholera	Ungraded	23-Mar-22	13-Jan-22	18-Mar-22	265	0	0	0.0%
Cholera outbreak has been reported from Sofala province, central region, Mozambique, on 13 January 2022. From 13 January 2022 as of 18 March 2022, 265 cases were reported with no deaths in Caia district. Of the eight samples collected, three tested positive for cholera by rapid diagnostic test (RDT) and five turned negative by culture. Response activities are ongoing.									
Mozambique	COVID-19	Grade 3	22-Mar-20	22-Mar-20	15-May-2022	225 498	225 498	2 201	1.0%
The first COVID-19 confirmed case was reported in Mozambique on 22 March 2020. As of 15 May 2022, a total of 225 498 confirmed COVID-19 cases were reported in the country including 2 201 deaths and 223 190 recoveries.									
Mozambique	Measles	Ungraded	25-Jun-2020	1-Jan-21	17-Apr-2022	3 599	903	0	0.0%
From week 1 to week 15 ,2022 (ending 17 April), a total of 582 suspected cases of measles and zero death have been reported through IDSR (Integrated Disease Surveillance and Response). The cumulative number of the reported cases since January 2021 is now 3 599									
Mozambique	Poliomyelitis (WPV1)	Ungraded	17-May-2022	18-May-2022	10-Jun-2022	1	1	0	0.0%
A wild poliovirus type 1 (WPV1) was detected in Mozambique from samples collected in late March 2022 from Changara district in Tete province. This new WPV1 is an orphan virus and is linked to the virus detected in Malawi (for which outbreak response vaccinations are ongoing in Malawi and neighbouring countries). The patient, a 12-year old female, had onset of paralysis on 25 March 2022. Her stool samples were collected on 1 April and 2 April 2022, and sent to the laboratory on 4 April 2022. No other case has been reported to date.									
Namibia	COVID-19	Grade 3	14-Mar-20	14-Mar-20	10-Jun-2022	168 403	168 403	4 049	0.0%
The first case of COVID-19 was detected in Namibia on the 14 March 2020. As of 10 June 2022, a total of 168 403 confirmed cases with 162 403 recovered and 4 049 deaths have been reported.									
Niger	Humanitarian crisis	Protracted 1	1-Feb-2015	1-Feb-2015	16-May-2022	-	-	-	-
According to OCHA statistics, 3.7 million people need humanitarian assistance in 2022. There is an increasing number of security incidents reported in the first five months of the year. The Far West, Far South East and the central part of the country are more affected. In Far West, Tillabery region, the security situation is worse with 136 cases of insecurity incidents reported from January to 16 May 2022 against 93 incidents during the same period in 2021 according to OCHA estimates. During the same period (January to 16 May 2022), the security incidents resulted into 54 588 new internally displaced persons. Since the beginning of the security crisis till 16 May 2022, 115 150 people are internally displaced. Food insecurity remains one of the major challenges faced by the country. Diffa and Tillabery regions are the most affected by food insecurity with 24% and 29% of the population affected respectively.									
Niger	COVID-19	Grade 3	19-Mar-20	19-Mar-20	11-Jun-2022	9 070	9 070	310	3.4%
From 19 March 2020 to 11 June 2022, a total of 9 070 cases with 310 deaths have been reported across the country. A total of 8 731 recoveries have been reported from the country.									

Country	Event	Grade	Date notified to WCO	Start of reporting period	End of reporting period	Total cases	Cases Confirmed	Deaths	CFR
Niger	Measles	Ungraded	5-Apr-2022	1-Jan-22	17-Apr-2022	6 103	323	6	0.1%
From week 1 to week 15 (ending 17 April) of 2022, a total of 6 103 cases and 6 deaths (CFR: 0.1%) have been reported. Among the 8 regions for the country, Agadez has the highest attack rate (59.8 cases per 100 000 inhabitants), followed by Niamey (46.7 cases /100 000) and Zinder (44.2 cases /100 000). Risk assessment found: 17 districts out of 72 for the country are at very high risk while 21 districts are at high risk. The response plan is being finalized in order to vaccinate in the 38 high risk and very high-risk districts as well as 11 districts in outbreak but not yet reflected in the risk profile									
Niger	Meningitis	Ungraded		1-Jan-21	22-May-2022	1 688	-	76	4.5%
Since the beginning of the year 2021 to week 2 of 2022 ending 16 January 2022, 1 688 cases have been reported with 76 deaths (CFR 4.5%). Two health districts in Zinder region crossed the alert threshold: Dungass with an attack rate (AR) of 4.5 cases per 100 000 inhabitants and Magaria with an attack rate (AR) of 4.8 cases per 100 000 inhabitants. An analysis of data by sub-districts indicates that some health areas crossed the epidemic threshold on week 49 of 2021 (ending 12 December). Neisseria meningitidis serogroup C (NmC) is the predominant germ identified in the 2 health districts. A request to the International Coordinating Group (ICG) for vaccine provision is underway for a vaccine campaign response.									
Niger	Poliomyelitis (cVDPV2)	Grade 2	1-Jan-20	1-Jan-21	8-Jun-2022	19	19	0	0.0%
No case of circulating vaccine-derived poliovirus type 2(cVDPV2) was reported this week. There are two cases reported in 2022. In addition a total of 17 cases was reported in 2021.									
Nigeria	Humanitarian crisis	Protracted 3	10-Oct-16	n/a	31-Mar-22	-	-	-	-
In northeastern Nigeria, humanitarian needs remain high, with 8.4 million people, including 58% children (4.9 million), requiring humanitarian assistance in 2022. A total of 2.1 million internally displaced persons (IDPs) remain displaced in the three northeastern states of Borno, Adamawa, and Yobe due to the ongoing conflict. In northwestern Nigeria, violence is multifaceted and multidimensional. Over 360 000 persons are displaced in three States, with Katsina (173 856) having the highest number of IDPs, followed by Zamfara (123 102) the epicenter of the banditry attacks. Over 81% of the IDPs reside in host communities, while the rest are living in camp like settings.									
Nigeria	COVID-19	Grade 3	27-Feb-2020	27-Feb-2020	10-Jun-2022	256 352	256 352	3 144	1.2%
The first case of COVID-19 was first detected in Nigeria on the 27 February 2020. As of 10 June 2022, a total of 256 352 confirmed cases with 250 131 recovered and 3 144 deaths have been reported.									
Nigeria	Lassa fever	Grade 1	1-Jan-21	1-Jan-21	1-May-2022	4 455	759	149	19.6%
Lassa fever is an endemic disease in Nigeria which is reportable through IHR. In week 17 of 2022 (ending 1 May), the number of new confirmed cases decreased from 18 in week 16 to eight cases, with three deaths. These were reported from Edo, Ondo, Gombe and Kogi States. Cumulatively from week 1 to 17 of 2022, a total of 759 confirmed cases including 149 deaths among confirmed cases have been reported with a case fatality rate (CFR) of 19.6% across 23 states. This is lower than the CFR for the same period in 2021 (21.0%). In total, 4 455 cases are suspected in 2022. Of all confirmed cases, 68% are from Ondo (28%), Edo (25%) and Bauchi (15%) States.									
Nigeria	Measles	Ungraded	14-Mar-22	1-Jan-22	20-Mar-22	9 905	1 294	0	0.0%
As of week 11, 2022 (ending 20 March), a total of 9 905 suspected measles cases were reported from all states across 516 (67%) LGAs. A total of 161 LGAs across 33 states have experienced an outbreak this year 2022. Ongoing outbreak in 134 new LGAs across 30 states with new outbreak in 31 new LGAs across 10 states. A total of 4 447 samples were collected and 1 294 were IgM+ (29%).									
Nigeria	Monkeypox	Ungraded	9-Sep-21	1-Jan-22	29-May-2022	66	21	1	1.5%
From 1 January to 29 May 2022, Nigeria has reported 66 suspected cases with one death from nine states across the country. Of these, 21 cases were laboratory-confirmed from the following states: Adamawa (5), Bayelsa (2), Cross River (2), Delta (2), Federal Capital Territory (2), Imo (1), Kano (2), Lagos (4), and River (1). One death was recorded in a 40-year-old male with renal co-morbidity.									
Nigeria	Poliomyelitis (cVDPV2)	Grade 2	1-Jun-2018	1-Jan-18	8-May-2022	494	423	0	0.0%
In 2022, 20 cVDPV2 cases have been reported in the country. There were 415 cVDPV2 cases and 18 environmental samples reported in 2021.									
Nigeria	Yellow fever	Grade 2	12-Sep-17	1-Jan-21	30-Apr-2022	54	54	3	5.6%
From 1 January 2021 to 30 April 2022, a total of 54 yellow fever cases tested positive by plaque reduction neutralization test (PRNT) at Institut Pasteur in Dakar. Some of these cases had a history of YF vaccination.									
Rwanda	COVID-19	Grade 3	14-Mar-20	14-Mar-20	11-Jun-2022	130 357	130 357	1 459	1.1%
The Rwanda Ministry of Health announced the confirmation of the first COVID-19 case on 14 March 2020. As of 11 June 2022, a total of 130 357 cases with 1 459 deaths and 128 612 recovered cases have been reported in the country.									
Sahel region	Humanitarian crisis	Grade 2	11-Feb-2022	-	20-May-2022	-	-	-	-
The humanitarian situation has further deteriorated in six countries of the Sahel: Burkina Faso, Cameroon, Chad, Mali, Niger, and Nigeria. The total amount of people in need of humanitarian assistance is 30 million. Additionally, more than 7 million people are internally displaced, and 0.89 million refugees have been registered. Problems such as violence, poverty, climate change, food insecurity, disease outbreaks, and military coups have persisted in the area for over a decade, however, incidents have been on the rise in recent months. The humanitarian situation causes additional challenges for the health of the population who are faced with weakened health systems among a context of food insecurity due to climate change.									
Sao Tome and Principe	COVID-19	Grade 3	6-Apr-2020	6-Apr-2020	5-Jun-2022	6 003	6 003	73	1.2%
On 6 April 2020, the Ministry of Health of Sao Tome and Principe reported the country's first case of COVID-19. As of 5 June 2022, a total of 6 003 confirmed cases of COVID-19 have been reported, including 73 deaths. A total of 5 918 cases have been reported as recoveries.									

Country	Event	Grade	Date notified to WCO	Start of reporting period	End of reporting period	Total cases	Cases Confirmed	Deaths	CFR
Sao Tome And Principe	Dengue	Grade 2	11-Apr-2022	15-Apr-2022	8-Jun-2022	403	403	1	0.2%
Sao Tome and Principe is facing the first ever documented dengue outbreak. From 15 April-7 June 2022, a total of 403 cases and 1 death (CFR 0.2%) have been confirmed via RDT from: Água Grande (335, 83.1%), Mézôchi (29, 7.2%), Lobata (22, 5.5%), Lemba (6, 1.5%), Caué (3, 0.7%), Cantagalo (3, 0.7%) and RAP (5, 1.2%). During week 22 (ending 7 June), there were 177 new cases were registered in the country. Água Grande's attack rate is by far the highest (39.7 per 10 000 inhabitants). The age group attack rates are: 10-19 years (11.6), 20-29 years (20.8), 30-39 years (23.2), 40-49 years (20.9), 50-59 years (26.1) and 60+ years (21.2). The 3 main clinical signs are fever (352, 87%), headache (264, 66%) and myalgia (140, 35%).									
Senegal	COVID-19	Grade 3	2-Mar-20	2-Mar-20	10-Jun-2022	86 150	86 150	1 967	2.3%
From 2 March 2020 to 10 June 2022, a total of 86 150 confirmed cases of COVID-19 including 1 967 deaths and 84 169 recoveries have been reported in Senegal.									
Senegal	Poliomyelitis (cVDPV2)	Grade 2		4-Apr-2021	4-May-2022	17	17	0	0.0%
No case of circulating vaccine-derived poliovirus type 2 (cVDPV2) was reported this week. There are 17 cases reported in 2021.									
Seychelles	COVID-19	Grade 3	14-Mar-20	14-Mar-20	9-Jun-2022	44 363	44 363	167	0.4%
Since the first COVID-19 confirmed cases were reported in Seychelles 14 March 2020 as of 9 June 2022, a total of 44 363 cases have been confirmed, including 43 905 recoveries and 167 deaths have been reported.									
Sierra Leone	Anthrax	Ungraded	20-May-2022	20-May-2022	30-May-2022	8	3	0	0.0%
The Ministry of Health and Sanitation in Sierra Leone has declared an outbreak of human anthrax in the country after identifying 3 lab confirmed cutaneous anthrax cases in Karene district. This is subsequent to an investigation of 7 suspected anthrax cases, all residing in Buya chiefdom, of whom 4 blood samples and swabs were collected and sent to the laboratory for confirmation. The investigation was conducted as follow up to reports of sickness and death of animals in the adjacent Port Loko district between March and April, with reported consumption of meat in surrounding communities. There was also prior confirmation of anthrax from tissues collected from some of the affected animals during epi week 19. As of 30 May 2022, a total of eight cases was reported. Majority of them are among the age group of 15 years and above (43%) followed by 12-59 months (29%), 0-11 months (14%) and 5-15 years (14%). Five of the cases reported symptoms onset from 11th to 27th April 2022 and the other two cases had symptoms onset on 5th May 2022.									
Sierra Leone	COVID-19	Grade 3	31-Mar-20	27-Mar-20	1-Jun-2022	7 682	7 682	125	1.6%
On 31 March 2020, the President of Sierra Leone reported the first confirmed COVID-19 case in the country. As of 1 June 2022, a total 7 682 confirmed COVID-19 cases were reported in the country including 125 deaths and 4 819 recovered cases.									
Sierra Leone	Lassa fever	Ungraded	12-Feb-2021	1-Jan-21	29-May-2022	20	20	11	55.0%
From the beginning of 2021 to 20 March 2022, a total of 20 cases and 11 deaths (55% CFR) have been reported due to Lassa fever in Sierra Leone. Cases were reported from Kenema (15), Kailahun (3), and Tonkolili (2) districts since the beginning of 2021. From these cases, 65% were females and 35% were <5 years old. Lassa fever is known to be endemic in Sierra Leone and surrounding countries. From 2016-2020 Sierra Leone experienced gradually declining trends in annual Lassa fever case totals, however, in 2021, cases doubled compared to 2020 (from 8 total reported in 2020 to 16 total in 2021).									
Sierra Leone	Measles	Ungraded	1-Nov-21	1-Jan-22	11-May-2022	379	379	0	0.0%
By 11 May 2022 (Week 19), 12 out of 16 districts reported 379 confirmed measles cases (106 lab confirmed and 273 epi linked; 64% (208) of these cases are below five years, 26.4 % (100) above five years and 18.7%, (71) age missing. Currently, three districts (Western Rural, Western Urban and Port Loko District) are experiencing measles outbreak. Surveillance and immunization activities have been intensified in all districts.									
Sierra Leone	Poliomyelitis (cVDPV2)	Grade 2	10-Dec-2020	10-Dec-2020	8-Jun-2022	15	15		0.0%
No new cases of circulating vaccine-derived poliovirus type 2 (cVDPV2) reported this week. Five cases were reported in 2021, and 10 were reported in 2020.									
South Africa	COVID-19	Grade 3	5-Mar-20	3-Mar-20	12-Jun-2022	3 978 590	3 978 590	101 484	3.4%
Since the start of the COVID-19 pandemic in South Africa through 12 June 2022, a cumulative total of 3 978 590 confirmed cases and 101 484 deaths have been reported with 3 854 873 recoveries.									
South Africa	Lassa fever	Ungraded	13-May-2022	14-May-2022	4-Jun-2022	2	1	1	50.0%
The Government of South Africa notified AFRO IHR of an imported case of Lassa fever from Nigeria to South Africa. The case had travel history to Nigeria during the six months preceding illness. He entered RSA on 25 April 2022 and was hospitalized on 1 May 2022 and died on 6 May 2022. The case was tested positive for Lassa fever RT PCR at the National Institute for Communicable Diseases. One suspected secondary case, a nurse who assisted the doctor intubating the index case was identified on 13 May 2022.									
South Sudan	Acute Food Insecurity	Grade 2	18-Dec-2020	5-Apr-2021	15-May-2022	-	-	-	-
From April to July 2022 an estimated 7.74 million people (63% of total population) faced crisis levels of food insecurity phase (IPC) 3 or worse. Of the total number, 87 000 are in IPC 5, 2.89 million are in IPC 4, and 4.77 million are in IPC 3. Food insecurity in South Sudan is driven by climatic shocks (floods, dry spells, and droughts), insecurity (caused by sub-national and localized violence), population displacements, persistent annual cereal deficits, diseases and pests, the economic crisis, the effects of COVID-19, limited access to basic services, and the cumulative effects of prolonged years of asset depletion that continue to erode households' coping capacities, and the loss of livelihoods.									
South Sudan	Floods	Grade 2	15-Jul-2021	1-May-2021	15-May-2022	-	-	-	-
Rains in South Sudan are projected to cause a fourth year of flooding in areas where large swathes of land are still inundated from last rainy season. Unity State is expected have displacement of more than 320 000 people who could experience loss of livelihoods, disease outbreaks and food insecurity. In 2021 the flooding began in May and affected over 835K people in 33 counties. A rapidly worsening situation was noted in October 2021. Measures are being taken to avert humanitarian crises by reinforcing peoples' homes and key infrastructure such as latrines and water wells.									

Country	Event	Grade	Date notified to WCO	Start of reporting period	End of reporting period	Total cases	Cases Confirmed	Deaths	CFR
South Sudan	Humanitarian crisis	Protracted 3	15-Aug-2016	n/a	5-Jun-2022	-	-	-	-
The long-standing and complex humanitarian crisis in South Sudan continues. In 2022, there is a total of 8.9 million people in need of humanitarian assistance and 2.02 million people internally displaced people as of 30 April 2022. South Sudan continues to have issues with violence, flooding, food insecurity, and disease threats. An estimated 7.7 million people are expected to be food insecure during April-July 2022 with at least 87 000 in IPC Phase 5, 2.9 million people in IPC Phase 4, and 4.8 million IPC Phase 3. Floods caused many people to become internally displaced as well as problems for water, sanitation, and hygiene conditions in formalized camps and informal settlements. Waters have not receded and are expected to worsen by the forthcoming rainy season.									
South Sudan	Anthrax	Ungraded	25-Apr-2022	13-Mar-22	29-May-2022	72	8	4	5.6%
A total of 72 suspected cases have been reported from Gogrial West county of in Warrap state. A total of 8 samples returned positive for bacillus anthracis bacteria. Cases were reported from 13 March - 18 May 2022 from registered hospital patients where the majority of cases have been female (67%).									
South Sudan	Cholera	Ungraded	21-Apr-2022	21-Mar-22	5-Jun-2022	149	15	1	0.7%
As of 5 June 2022, 149 cases and 1 death (CFR 0.7%) have been reported from Rubkona County of Unity State, mostly (82.5%) from the Bentiu IDP camp. A total of 29 cases have been confirmed positive by RDT for cholera and 15 tested positive by culture at the National Public Health Laboratory in Juba. Females account for 65.1% of all cases. Rubkona county experienced unprecedented floods in 2021 with flood waters persisting up to the end of the current dry season and the flood surface water is often used for bathing and playing.									
South Sudan	COVID-19	Grade 3	5-Apr-2020	5-Apr-2020	12-Jun-2022	17 659	17 659	138	0.8%
On 5 April 2020, the Ministry of Health of South Sudan reported the country's first case of COVID-19. As of 12 June 2022, a total of 17 659 confirmed COVID-19 cases were reported in the country including 138 deaths and 14 405 recovered cases.									
South Sudan	Hepatitis E	Ungraded	3-Jan-18	1-Jan-19	05-Jun-2022	2 703	104	24	0.9%
The current outbreak in the Bentiu IDP camp is ongoing. As of 5 June 2022, a total of 2 703 cases of hepatitis E including 24 deaths (CFR: 0.9%) have been reported since January 2019. During week 22 (ending 5 June), a total of 45 cases were reported. Approximately 54% of cases are male.									
South Sudan	Malaria	Ungraded	28-Dec-2021	1-Jan-22	22-May-2022	1 117 138	1 117 138	232	0.0%
Between weeks 1-20 of 2022 (ending 22 May), 1 117 138 malaria cases including 232 deaths (CFR 0.02%) have been reported in South Sudan. There were 3 counties exceeding third quartile malaria trends for the past five years including Aweil Centre, Torit, and Jur River counties during week 20. In 2021, a total of 3 749 210 malaria cases including 2 963 deaths were reported. Several upsurges occurred in the country in 2021 including the counties of Fangak.									
South Sudan	Measles	Ungraded	23-Feb-2022	1-Jan-22	15-May-2022	681	421	2	0.3%
A measles outbreak was declared by health authorities of South Sudan on 23 February 2022 in two counties, Torit and Maban. As of week19, 2022 (ending 15 May), eight counties (of 79 counties nationally) have now confirmed measles outbreaks (Aweil Centre, Aweil East, Aweil West, Gogrial West, Maban, Raja, Tambura, and Torit). Overall, 681 suspected measles cases and two deaths (CFR 0.3%) have been reported using the early warning alert and response system (EWARS) and investigated countrywide as part of integrated disease surveillance and response (IDSR) since the beginning of 2022. Among those 681, 421 have been reported from the eight counties with confirmed outbreaks. Most cases are children under five years old (59%) and 53% of cases are male.									
South Sudan	Poliomyelitis (cVDPV2)	Grade 2	22-Oct-20	22-Oct-20	10-Jun-2022	59	59	0	0.0%
No case of circulating vaccine-derived poliovirus type 2 (cVDPV2) were reported this week. There were 9 cVDPV2 cases reported in 2021 and 50 in 2020.									
Tanzania, United Republic of	Cholera	Ungraded	25-Apr-2022	14-Apr-2022	23-May-2022	214	24	1	0.5%
The Ministry of Health of The United Republic of Tanzania notified WHO on 25 April 2022 of an outbreak of cholera in Kigoma and Katavi Regions. From 14 Apr to 12 May 2022, 214 cumulative cases and 1 death (CFR 0.5%) have been reported from the Districts of Tanganyika in Katavi Region (88, 41.1%) and Uvinza in Kigoma Region (126, 58.8%). A total of 24 cases have been confirmed positive for Vibrio cholerae. About 37% of cases have been reported among children 3-10 years.									
Tanzania, United Republic of	COVID-19	Grade 3	16-Mar-20	16-Mar-20	29-May-2022	34 988	34 988	840	2.4%
The Ministry of Health, Community Health, Community Development, Gender, Elderly and Children in Tanzania reported the country's first case of COVID-19 on 16 March 2020. As of 29 May 2022, a total of 34 988 confirmed cases have been reported in Tanzania Mainland including 840 deaths.									
Togo	COVID-19	Grade 3	6-Mar-20	1-Mar-20	12-Jun-2022	37 196	37 196	273	0.7%
On 6 March 2020, the Ministry of Health and Public Hygiene of Togo announced the confirmation of its first case of COVID-19. As of 12 June 2022, a total of 37 196 cases including 273 deaths and 36 855 recovered cases have been reported in the country.									
Togo	Measles	Ungraded	2-Feb-2022	25-Nov-21	20-Mar-22	831	134	0	0.0%
A measles outbreak has been declared by the Togolese health authorities on 9 February 2022 after confirmation at National Referral Laboratory for Epidemic prone Diseases. As of 20 March, a total of 831 cases and 0 death, have been reported through Integrated Disease Surveillance and Response (IDSR). The outbreak started in November 2021 in the Zio district.									
Togo	Poliomyelitis (cVDPV2)	Grade 2	18-Oct-19	13-Sep-19	16-Mar-22	17	17	0	0.0%
No new case of cVDPV2 was reported during the past week. No cases have been reported in 2021. There were nine cases in 2020 while the total number of cVDPV2 cases reported in 2019 remains eight.									
Uganda	Anthrax	Ungraded	26-May-2022	16-May-2022	16-May-2022	8	7	1	12.5%
An anthrax outbreak has been confirmed in Buduba District, Uganda. Eight suspected human cases were reported and clinically evaluated in four villages. Of these, seven were sampled and one died on 16 May without being sampled. The date of onset of symptoms was between 2 and 12 May 2022. The district performed a preliminary test using Gram stain which was positive with purple rods in chains. A total of 14 cows have been reported dead so far									

Country	Event	Grade	Date notified to WCO	Start of reporting period	End of reporting period	Total cases	Cases Confirmed	Deaths	CFR
Uganda	COVID-19	Grade 3	21-Mar-20	21-Mar-20	11-Jun-2022	166 319	166 319	3 602	2.2%
The first COVID-19 confirmed case was reported in Uganda on 21 March 2020. As of 11 June 2022, a total of 166 319 confirmed COVID-19 cases with 3 602 deaths were reported.									
Uganda	Yellow fever	Grade 2	3-Mar-21	2-Jan-22	4-Jun-2022	199	1	0	0.0%
There have been 199 suspected cases of yellow fever during 2 January-4 June 2022 in Uganda with no deaths reported. As of 4 June 2022, there have been five total samples testing positive by plaque reduction neutralization test (PRNT) at the Uganda Virus Research Institute (UVRI), however, only one case from Wakiso District was classified as confirmed after thorough investigation. The case is of an unvaccinated female 49-years-old who has recovered. Rapid Response Team was activated and deployed in March 2022 to conduct additional investigations and support the affected districts.									
Zambia	Cholera	Ungraded	13-Apr-2022	11-Apr-2022	28-May-2022	21	21	0	0.0%
A cholera outbreak was declared in Zambia on 3 May 2022. A total of 21 cases have been registered with no deaths as of 29 May 2022. Three districts are affected: Lusaka (7 cases), Chilanga (9 cases) and Nsama (5 cases).									
Zambia	COVID-19	Grade 3	18-Mar-20	18-Mar-20	12-Jun-2022	323 283	323 283	3 989	1.2%
The first COVID-19 confirmed case was reported in Zambia on 18 March 2020. As of 12 June 2022, a total of 323 283 confirmed COVID-19 cases were reported in the country including 3 989 deaths and 318 247 recovered cases.									
Zimbabwe	Anthrax	Ungraded	6-May-2019	1-Jan-22	20-Mar-22	22	0	0	0.0%
The anthrax outbreak is ongoing in Zimbabwe. Six new cases were reported in Week 3 of 2022 with the cumulative for the year being 22. The cases were reported by Gokwe North District and Gokwe South District in Midlands Province. This outbreak started in Week 36 of 2019, affecting mainly Buzura and Gokwe North and South districts but a surge in cases started appearing in week 38 when cases were reported in some other areas. The cumulative figures for anthrax are 747 cases and 3 deaths in 2020 and 306 cases and 0 deaths in 2021.									
Zimbabwe	COVID-19	Grade 3	20-Mar-20	20-Mar-20	14-May-2022	249 206	249 206	5 482	2.2%
The first COVID-19 confirmed case was reported in Zimbabwe on 20 March 2020. As of 14 May 2022, a total of 249 206 confirmed COVID-19 cases were reported in the country including 5 482 deaths and 242 417 cases that recovered.									
Zimbabwe	Measles	Ungraded	29-Apr-2022	19-May-2022	19-May-2022	270		29	10.7%
A total of 270 cases have so far been identified since the first rumours surfaced on 10 April 2022 in Mutasa District. 31 are vaccinated, 171 are not vaccinated and 28 have unknown vaccination status. 29 deaths have so far been recorded with a fatality rate of 12.6%. Of the 29 deaths, 20 were unvaccinated and 9 vaccination status is unknown. Zindi clinic has reported 179 cases so far contributing 66.3%.									
Closed Events									
Ethiopia	Suspected Meningitis	Ungraded	17-Feb-2022	1-Jan-22	15-May-2022	2 330	12	16	0.7%
From week 1 to week 19 (ending 15 May) , a total of 2 330 suspected meningitis cases and 16 deaths (CFR 0.7%) were reported with a total of 52 woredas reported at least one suspected meningitis case. In general, these five (Oromia, Somali, Amhara, SNNPR & Harari) regions accounted for 87.4% among total suspected meningitis cases reported; 69 Cerebrospinal fluid (CSF) samples (32 from health facilities and 37 from sentinel sites) were collected and are being processed, and 12 samples tested positive for meningococcus, additional testing is being made.									
South Sudan	Suspected Meningitis	Ungraded	25-Apr-2022	1-Jan-22	5-Jun-2022	247	4	23	9.3%
A total of 247 suspected cases of meningitis have been reported from all 5 counties in NBeG from week 1-22, 2022. Most cases were reported among those aged 15+ (43%). Of these suspected cases, there have been 23 deaths (CFR 9.3%) of which most have occurred in infants <1yr (57% of all deaths). Aweil East and Aweil West reported the highest cumulative attack rates.									

†Grading is an internal WHO process, based on the Emergency Response Framework. For further information, please see the Emergency Response Framework: <http://www.who.int/hac/about/erf/en/>.

Data are taken from the most recently available situation reports sent to WHO AFRO. Numbers are subject to change as the situations are dynamic.

© WHO Regional Office for Africa

This is not an official publication of the World Health Organization.

Correspondence on this publication may be directed to:

Dr Etien Luc Koua

Programme Area Manager, Health Emergency Information and Risk Assessment Programme.

WHO Emergency Preparedness and Response

WHO Regional Office for Africa

P O Box. 06 Cité du Djoué, Brazzaville, Congo

Email: afrooutbreak@who.int

Requests for permission to reproduce or translate this publication – whether for sale or for non-commercial distribution – should be sent to the same address.

The designations employed and the presentation of the material in this publication do not imply the expression of any opinion whatsoever on the part of the World Health Organization concerning the legal status of any country, territory, city or area or of its authorities, or concerning the delimitation of its frontiers or boundaries. Dotted lines on maps represent approximate borderlines for which there may not yet be full agreement.

All reasonable precautions have been taken by the World Health Organization to verify the information contained in this publication. However, the published material is being distributed without warranty of any kind, either express or implied. The responsibility for the interpretation and use of the material lies with the reader. In no event shall the World Health Organization or its Regional Office for Africa be liable for damages arising from its use.

Contributors

Marie-josé KIKOO BORA, (Democratic Republic of the Congo)
Gervais Leon FOLEFACK TENGOMO, (Democratic Republic of the Congo)

A. Moussongo

Editorial Team

G. Sie Williams
J. Nguna
J. Kimenyi
O. Ogundiran
F. Kambale
R. Mangosa Zaza
J. Njingang Nansseu
V. Mize
C. Okot

Production Team

T. Mlanda
R. Ngom
F. Moussana

Editorial Advisory Group

Dr. Salam Gueye, C
E. Koua
D. Chamla
F. Braka

Data sources

Data and information is provided by Member States through WHO Country Offices via regular situation reports, teleconferences and email exchanges. Situations are evolving and dynamic therefore numbers stated are subject to change.