



# THE GLOBAL PARTNERSHIP AT A GLANCE

## What does the Global Partnership for Effective Development Co-operation (GPEDC) do?

The Global Partnership for Effective Development Co-operation (GPEDC) is the primary multistakeholder vehicle for driving development effectiveness, to maximize the effectiveness of all forms of co-operation for development for the shared benefits of people, planet, prosperity and peace. It brings together governments, bilateral and multilateral organizations, civil society, the private sector and representatives from parliaments and trade unions among others, who are committed to strengthening the effectiveness of their partnerships for development. The GPEDC supports practical implementation of effective development co-operation principles, promotes mutual accountability, and works to sustain political momentum for more effective co-operation and partnerships.

**NATIONAL AND LOCAL GOVERNMENTS**

**CIVIL SOCIETY**

**PRIVATE SECTOR**

**BILATERAL AND MULTILATERAL ORGANIZATIONS**

**TRADE UNIONS**

**PARLIAMENTS**

**PHILANTHROPY**

The GPEDC and its partners support the practical implementation of the internationally-agreed effective development co-operation principles:

**Country ownership over the development process**

All partners work together under government leadership to maximize the impact of development resources and achieve national priorities.

**A focus on results**

Development efforts have a lasting impact on eradicating poverty and enhancing partner countries' capacities.

**Inclusive development partnerships**

All partners are engaged in development planning and implementation, recognizing their specific and complementary roles.

**Transparency and mutual accountability**

Stakeholders are transparent in their co-operation and hold each other accountable for delivering on mutually-agreed outcomes.

## How is the GPEDC supporting achievement of the 2030 Agenda for Sustainable Development?

The 2030 Agenda – as well as the short time remaining in which to deliver it – highlights the need to mobilize more resources, use them more effectively and bring in more partners to drive sustainable development. The GPEDC supports more effective development co-operation by focusing its work on 3 strategic priorities and 9 action areas. You can find more information [here](#).

**PRIORITY 1 Promoting development effectiveness to accelerate the implementation of the 2030 Agenda**

- A.A. 1.1: Demonstrating the impact of effectiveness
- A.A. 1.2: Strengthening effective support to statistical capacity and data

**PRIORITY 2 Building better partnerships**

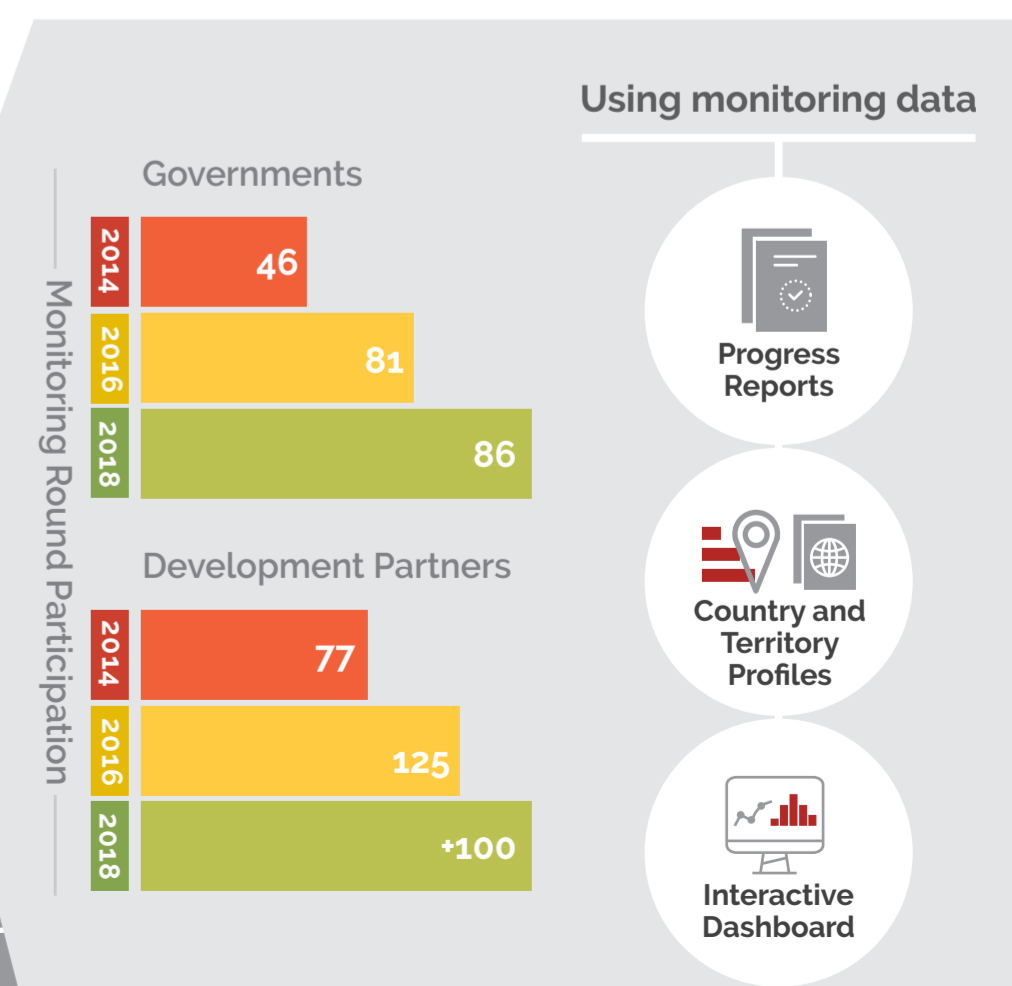
- A.A. 2.1: Private sector engagement
- A.A. 2.2: Effective Triangular co-operation
- A.A. 2.3: Effective south-south co-operation
- A.A. 2.4: Civil society engagement
- A.A. 2.5: Foundations' engagement
- A.A. 2.6: Effective co-operation at subnational level
- A.A. 2.7: Effective multilateral support

**PRIORITY 3 Leveraging monitoring for action**

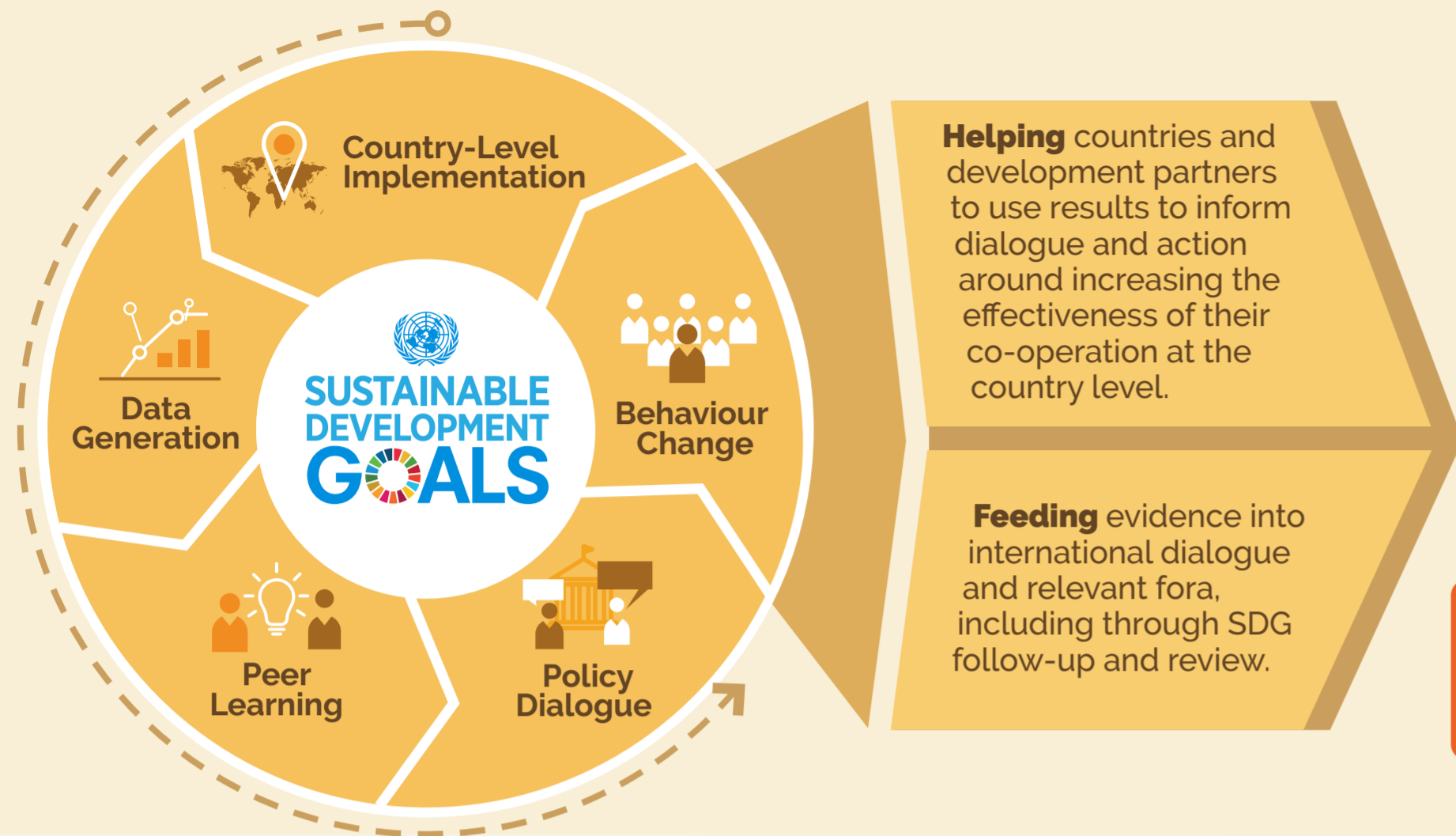
- By supporting a voluntary, country-led and multi-stakeholder process to track implementation of effective development co-operation commitments at the national level through ten key indicators.
- Using monitoring results for dialogue and action
- Through the Global Partnership monitoring reform

GPEDC monitoring provides evidence to SDG follow-up and review on:

- Respecting countries' policy space and leadership (SDG 17.15)
- Multi-stakeholder partnerships for development (SDG 17.16)
- Gender equality and women's empowerment (SDG 5c)



## How is the GPEDC helping drive more effective development co-operation?



## Countries and their partners are committing to more effective development co-operation

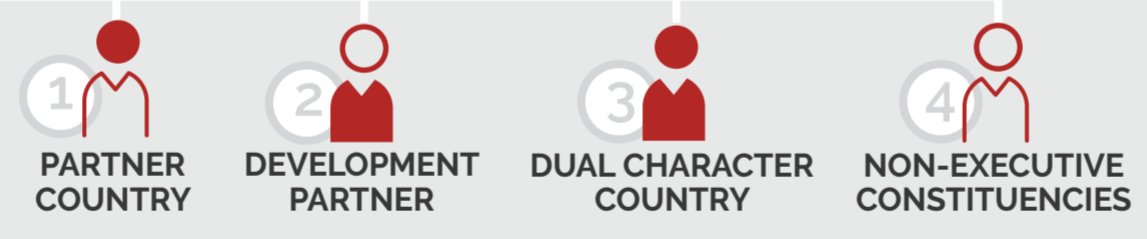


## The GPEDC's multi-stakeholder network

**Our Global Reach:**  
The GPEDC brings together 161 countries and 56 organizations around the four principles that form the foundation of effective development co-operation, as agreed in the 2011 Busan Partnership Agreement. The GPEDC is jointly supported by the OECD and UNDP.

**Co-Chairs:**  
The GPEDC is led by 3 minister/ ambassador-level Co-Chairs and a 4th Co-Chair representing all non-executive constituencies. Bangladesh, Germany, Indonesia, Malawi, Mexico, the Netherlands, Nigeria, Uganda and the United Kingdom have all served as Co-Chairs.

**A Steering Committee:**  
The GPEDC's governing body includes 25 representatives of national and local governments, civil society, the private sector, trade unions, parliaments and philanthropy. It meets biannually to guide the work of the GPEDC.



## The journey from Paris to the present: Towards more inclusive development co-operation

