

WEEKLY BULLETIN ON OUTBREAKS AND OTHER EMERGENCIES

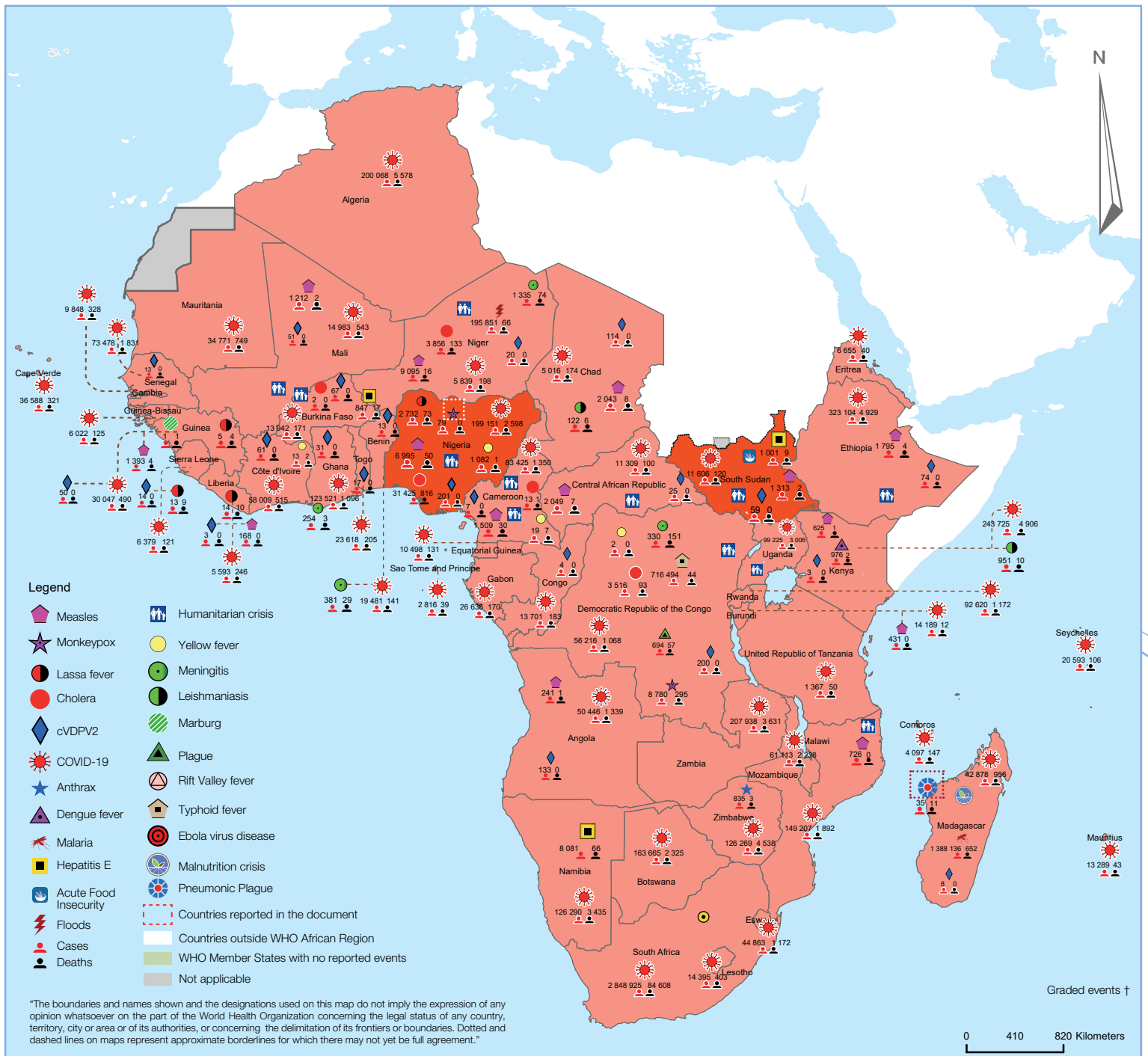
Week 37: 6 - 12 September 2021
Data as reported by: 17:00; 12 September 2021

2
New events

124
Ongoing events

112
Outbreaks

14
Humanitarian crises



3
Grade 3 events

3
Protracted 3 events

29
Grade 2 events

4
Protracted 2 events

2
Grade 1 events

3
Protracted 1 events

36
Ungraded events

Overview

Contents

1 Overview

2-6 Ongoing events

7 All events currently being monitored

This Weekly Bulletin focuses on public health emergencies occurring in the WHO African Region. The WHO Health Emergencies Programme is currently monitoring 126 events in the region. This week's articles cover:

- [COVID-19 across the WHO African region](#)
- [Pneumonic Plague in Madagascar](#)
- [Monkeypox in Nigeria](#)

For each of these events, a brief description, followed by public health measures implemented and an interpretation of the situation is provided.

A table is provided at the end of the bulletin with information on all new and ongoing public health events currently being monitored in the region, as well as recent events that have been controlled and closed.

Major issues and challenges include:

- A decline in the number of COVID-19 cases has been observed for the last two months in the WHO African region, however it has been declining slower than in previous waves owed to the persistent effects of variants. In the past week, the region recorded its steepest drop in weekly COVID-19 cases since its peak in early July. The decline has also been attributed to an increasing number of countries registering a decrease of 20% or more in the number of new cases reported compared to the previous week. South Africa continues to report more than half of all new cases in the region, followed by Ethiopia, and Nigeria. The number of deaths reported across the region also declined significantly in the past week. In Southern Africa, almost all countries are reporting a declining trend, following weeks of implementing stringent public health and safety measures. As many countries begin to relax restriction measures, the risk of resurgence remains high amidst circulation of highly transmissible variants of concern in the region. At present, fifteen countries are currently experiencing a resurgence, of which Algeria, Benin, Mauritius and Kenya are in a fourth wave of the pandemic.
- Madagascar is experiencing an outbreak of pneumonic plague which has reoccurred after more than three years following another large-scale outbreak that the country faced in 2017. A total of twelve cases and seven deaths have been reported so far. Although the country has experience in managing plague outbreaks, the risk of the disease spreading to areas not yet affected and especially large urban centers which have a population density remains high. The occurrence of other crises in the country like the humanitarian crisis, malnutrition, and the COVID-19 pandemic continues to put pressure on the health system. It is therefore urgent to take the appropriate measures to prevent the spread of this outbreak.
- Nigeria has had ongoing monkeypox transmission since September 2017. In August 2021, nine suspected cases were reported in the country which was a substantial increase from the previous month. Overall, seventy-nine suspected cases have been reported this year with no deaths recorded. Low utilisation of health facilities by patients due to stigmatisation, cost of care, and low mortality rate coupled with low sample collection rate in reporting states are currently posing a challenge to the response. In mid-July, a case of monkeypox from Nigeria was reported to have been imported into the United States highlighting the risk of cross-border spread and need for collaboration in line with the One health approach to disease management and response.

Ongoing events

Coronavirus disease 2019

African region

5 748 519 : 139 718 : 2.4%
Cases : Deaths : CFR

In the past week (5 – 12 September 2021), the WHO African region reported a total of 75 561 new cases of coronavirus disease (COVID-19), a 31% decrease compared to the prior week when 113 641 new cases were reported. Only four (8.7%) countries saw a 20% or more increase in weekly cases compared to the previous week: Angola, Chad, Gabon and Sao Tome and Principe.

Conversely, 30 (65%) countries reported a decrease of 20% or more in the number of new cases reported compared to the previous week. These countries are Algeria, Benin, Botswana, Burundi, Central African Republic, Comoros, Congo, Côte d'Ivoire, Democratic Republic of the Congo, Eswatini, Gambia, Ghana, Guinea, Kenya, Madagascar, Malawi, Mali, Mauritania, Mauritius, Mozambique, Namibia, Niger, Senegal, Seychelles, Sierra Leone, South Africa, Togo, Uganda, Zambia and Zimbabwe.

Five countries account for the majority (56 415, 75.0%) of the cases recorded in the past week namely, South Africa (38 250 new cases; 31% decrease, 65.3 new cases per 100 000 population), Ethiopia (8 120 new cases; 8.4% decrease; 7.2 new cases per 100 000), Nigeria (3 640 new cases; 13.0% decrease; 1.8 new cases per 100 000), Kenya (3 553 new cases; 32% decrease; 6.8 new cases per 100 000), and Rwanda (2 852 new cases; 10.0% decrease; 22.6 new cases per 100 000).

The region recorded a 20.3% (n=2 413) decrease in the number of new deaths reported from a total of 29 countries. The highest numbers of new deaths were reported from South Africa (1 458 new deaths; 20.1% decrease; 2.5 new deaths per 100 000 population), Ethiopia (166 new deaths; 39.5% increase; 0.1 new deaths per 100 000), Algeria (158 new deaths; 25.1% decrease; 0.4 new deaths per 100 000), Kenya (120 new deaths; 58.0% increase; 0.2 new deaths per 100 000), and Zimbabwe (72 new deaths; 10.8% increase; 0.5 new deaths per 100 000).

The cumulative number of confirmed COVID-19 cases reported in the WHO African region is 5 748 519. More than 5.2 million recoveries have been recorded, giving a recovery rate of 92.0%. The total number of deaths reported is now at 139 718, accounting for a case fatality ratio (CFR) of 2.4%. The WHO African Region, accounts for 2.4% of global cases and 2.7% of global deaths, making it one of the least affected regions in the world after the WHO Western Pacific Region.

In general, death trends are on the rise in five countries, Angola, Benin, Cote d'Ivoire, Ethiopia, and Nigeria. Eleven countries have reported higher case fatality rates than the region's average of 2.4% in the past 4 weeks. A decline in new deaths recorded in Algeria, Angola, Botswana, and Zimbabwe has been observed. Five countries reported zero deaths in the past 4 weeks: Burundi, Chad, Comoros, Liberia, Sierra Leone and South Sudan.

A total of 15 countries are still experiencing a resurgence of COVID-19 cases in the region namely Benin, Botswana, Burundi, Cabo Verde, Cote d'Ivoire, Democratic Republic of the Congo, Eswatini, Ethiopia, Ghana, Kenya, Mauritius, Rwanda, Sao Tome and Principe, South Africa, and Togo. Four countries, Algeria, Benin, Mauritius and Kenya, are experiencing a fourth wave.

Cumulatively, the highest number of COVID-19 cases in the region has been recorded in South Africa 2 858 195 cases

(50.0%), followed by Ethiopia 323 104 (5.6%), Kenya 243 725 (4.2%), Zambia 207 938 (3.6%), and Algeria 200 068 (3.5%). These five countries account for 66.6% (n=3 833 030) of all cases. South Africa also has the highest number of deaths in the region (84 877 deaths, 61.0% of all deaths); followed by Algeria (5 578, 3.9%), Ethiopia (4 929, 3.5%), Kenya (4 906, 3.5%), and (Zimbabwe 4 538, 3.2%), all accounting for (104 828, 74.9%) of all total deaths reported in the region.

A total of 220 new health worker infections were reported during this reporting period (6 – 12 September 2021) from Eswatini (104), Democratic Republic of the Congo (40), Equatorial Guinea (28), and Equatorial Guinea (33), and Namibia (15). To-date, there have been 121 848 COVID-19 infections (2.1% of all cases) among health workers in the region, with South Africa accounting for about 46.1% (56 180) of the total infections. Algeria (11 936, 9.8%), Kenya (7 329, 6.0%), Zimbabwe (5 366, 4.4%) and Mozambique (4 779, 4.0%) have also recorded high numbers of health worker infections. Other countries reporting health worker infections are shown in Table 1. Algeria (6.0%), Niger (6.0%), Chad (5.8%), Liberia (5.7%), and Seychelles (5.0%) have the highest proportion of health worker infections by country. Only Eritrea has not reported any healthcare worker infections.

All countries in the WHO African region are experiencing some degree of community transmission. Nine (20.0%) countries are reporting uncontrolled incidence (Botswana, Rwanda, Eswatini, Cabo Verde, Namibia, Seychelles, South Africa, Zambia and Zimbabwe), 13 (28.3%) with high incidence, 15 (33.0%) with moderate incidence and nine (20.0%) with low incidence community transmission.

The African continent has recorded more than 8.0 million cases of COVID-19, with more than 202 000 deaths (CFR 2.5%) and over 7.3 million people have recovered. The African continent accounts for 3.4% of global cases and 4.0% of global deaths.

Globally, more than 5.5 billion doses have been administered, only 2% of which have been administered in Africa. This equates to a cumulative total of 68 doses per 100 people worldwide, over 8 doses/100 in Africa and just over 5 doses/100 in sub-Saharan Africa.

High-income countries have administered 50 times more doses per person than low-income countries.

SITUATION INTERPRETATION

Although the WHO African region has seen a steady decline in the number of new cases in the past two months, sub-regional case trends vary. The decline is driven largely by Algeria in the North and Botswana, Eswatini, Malawi, South Africa, Namibia, Zambia and Zimbabwe in Southern Africa, as these two sub-regions account for more than half of the cases in the third wave. The weekly case numbers are however still high exceeding a daily average of 10 700 cases and four countries are reportedly facing a fourth wave. Even though Algeria, Ethiopia, Kenya,

[Go to overview](#)

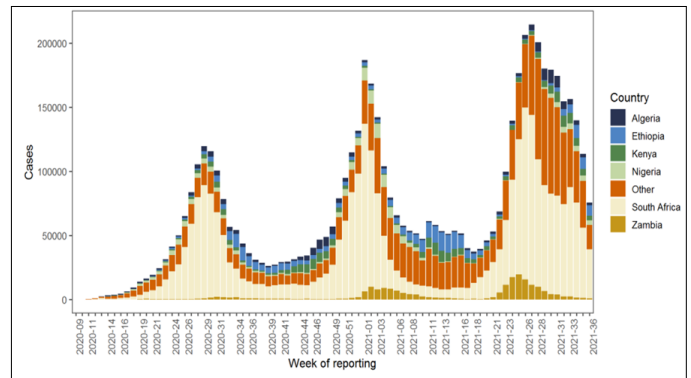
2

[Go to map of the outbreaks](#)

Nigeria and South Africa are among countries seeing a decline in new cases, they still account for a large proportion of the region's new cases in the last seven days. At the same time, weekly COVID-19 deaths in the region decreased in the past week with South Africa accounting for more than half of all fatalities. As the number of vaccine doses administered in sub-Saharan Africa continue to increase, countries are advised to enhance a multidimensional approach combining pharmaceutical and public health and social measures to sustain the downward trend of cases reported in the region.

vaccination, hand hygiene, physical distancing, and wearing a face covering when physical distancing is impractical to prevent the spread of disease.

The weekly distribution of confirmed cases of COVID-19 in the WHO African Region by week of reporting, 25 February 2020 – 12 September 2021 (n = 5 748 519)



PROPOSED ACTIONS

- Member states are advised to enhance their surveillance and detection systems, case management capacity and improve the supply of critical medicines. Countries should adapt vaccination strategies to accommodate for different vaccines to ensure doses are administered efficiently. Countries must continue to address operational gaps and continually improve, adapt and refine their COVID-19 vaccination campaigns. The WHO advises strict adherence to the basic precautionary and control measures including



Countries with reported laboratory-confirmed COVID-19 cases and deaths: Data as of 12 September 2021

Country	Total Cases	Total Deaths	Recovered Cases	Case fatality Ratio (%)	Health Worker infections
South Africa	2 858 195	84 877	2 667 296	3.0	56 180
Ethiopia	323 104	4 929	290 748	1.5	3 354
Kenya	243 725	4 906	232 918	2.0	7 329
Zambia	207 938	3 631	203 342	1.7	1 121
Algeria	200 068	5 578	136 662	2.8	11 936
Nigeria	199 151	2 598	186 418	1.3	3 175
Botswana	163 665	2 325	158 338	1.4	61
Mozambique	149 207	1 892	141 392	1.3	4 779
Namibia	126 290	3 435	121 373	2.7	4 293
Zimbabwe	126 269	4 538	118 792	3.6	5 366
Ghana	123 521	1 096	117 352	0.9	4 763
Uganda	99 701	3 031	95 590	3.0	2 892
Rwanda	92 620	1 172	45 716	1.3	682
Cameroon	84 210	1 357	81 526	1.6	2 841
Senegal	73 478	1 831	66 925	2.5	419
Malawi	61 113	2 238	50 384	3.7	2 173
Côte d'Ivoire	58 009	515	55 925	0.9	1 084
Democratic Republic of the Congo	56 215	1068	47 142	1.9	727
Angola	50 446	1339	44 652	2.7	939
Eswatini	44 863	1172	42 510	2.6	957
Madagascar	42 873	956	41 917	2.2	70
Cabo Verde	36 588	321	35 212	0.9	140
Mauritania	34 771	749	32 733	2.2	24
Guinea	30 047	368	28 038	1.2	682
Gabon	26 638	170	25 893	0.6	345
Togo	23 618	205	18 512	0.9	891
Seychelles	20 593	106	19 934	0.5	945
Benin	19 841	141	15 837	0.7	139
Mali	14 984	543	14 173	3.6	87
Lesotho	14 395	403	6 830	2.8	473
Burundi	14 189	12	13 344	0.1	38
Burkina Faso	13 942	171	13 606	1.2	288
Congo	13 701	183	13 050	1.3	203
Mauritius	13 289	43	9 613	0.3	30
South Sudan	11 614	120	11 195	1.0	294
Central African Republic	11 309	100	11 125	0.9	1
Equatorial Guinea	10 498	131	9 152	1.2	466
Gambia	9 848	328	9 457	3.3	142
Eritrea	6 655	40	6 611	0.6	0
Sierra Leone	6 379	121	4 373	1.9	263
Guinea-Bissau	6 022	125	5 144	2.1	23
Niger	5 912	199	5 648	3.4	355
Liberia	5 727	245	5 240	4.3	328
Chad	5 018	174	4 819	3.5	292
Comoros	4 097	147	3 931	3.6	155
Sao Tome and Principe	2 816	39	2 504	1.4	102
United Republic of Tanzania	1 367	50	180	3.7	1
Cumulative Cases (N=47)	5 748 519	139 718	5 273 072	2.4	121 848

*Total cases includes one probable case from Democratic Republic of the Congo

EVENT DESCRIPTION

Health Authorities in Madagascar received an alert of plague on 29 August 2021, from the local administrative authorities of Miandrandra, Arivonimamo district, in the Itasy region. The case was a 23-year-old male resident of Ankararana village in the Miandrandra community. He had an onset of illness on 23 August 2021, and later sought medical care at the Miandrandra health center on 29 August 2021 while presenting with symptoms suggestive of pulmonary plague (fever, headache, weakness shortness of breath, chest pain, cough, and bloody or watery sputum).

On 31 August 2021, the preliminary results of the investigation showed a total of 30 suspected cases of pulmonary plague, including seven deaths (four community deaths and three health facility-based), giving a case fatality ratio of 23%. Twenty laboratory samples (12 blood and eight sputum) were collected and sent to the Pasteur Institute of Madagascar for analysis. Of these 20 samples, 12 (60%) were PCR positive, confirming the outbreak of pneumonic plague in the country.

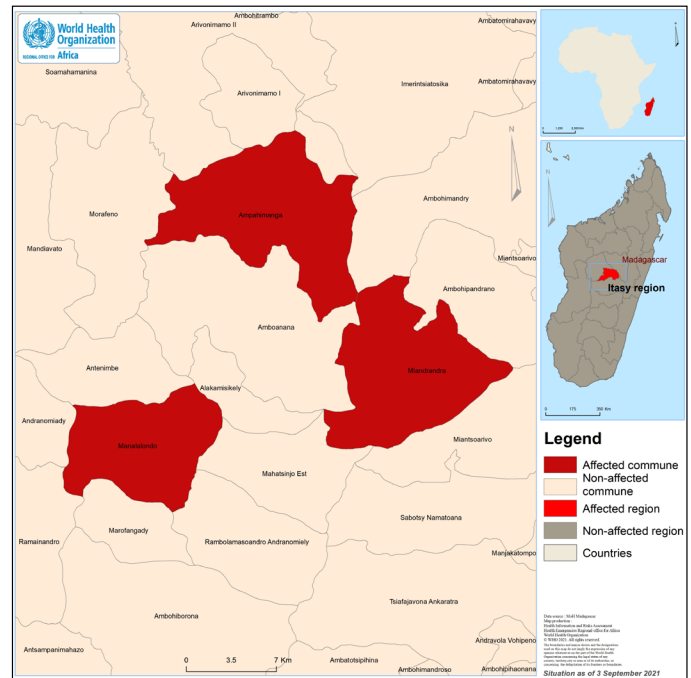
The average age of cases is 39.6 years, with a male to female sex ratio of 1.1. The peak of suspected cases reported was observed on 29 August 2021, with 9 cases reported in a single day. A cumulative total of 916 contacts have been identified and are currently monitored, all of them received chemoprophylaxis.

All the reported cases were geographically located in three communities of Arivonimamo district (Ampahimanga, Manalalondo and Miandrandra). Itasy region is a densely populated area and has regularly been one of the most affected regions during previous plague outbreaks. Arivonimamo district is located at only 51 km from Antananarivo, the capital city of the country and traffic is intense between those two areas. In 2017, Madagascar faced a large-scale pneumonic plague outbreak that affected endemic and non-endemic areas, including large urban centers like Antananarivo and Toamasina.

PUBLIC HEALTH ACTIONS

- The Ministry of health response team conducted a field mission to the affected areas for an in-depth epidemiological investigation as well as to support local investigation teams.
- Plague control committees were activated in the affected areas. Vector control and anti-reservoir rodent control through environmental sanitation activities are underway.
- Management of reported cases at healthcare facilities is ongoing.
- Collection of specimen samples is ongoing with rapid diagnostic tests and shipment of samples to the Pasteur Institute of Madagascar for further analysis and confirmation.
- Teams are conducting active case finding, listing contacts and administering chemoprophylaxis to high-risk contacts.
- Sensitization of the population on plague prevention measures in the affected areas.

Geographical location of Pneumonic plague cases in Madagascar, as of 3 September 2021.



SITUATION INTERPRETATION

- Plague is endemic in Madagascar and cases are reported each year in bubonic and pulmonary forms. The annual season for increased disease transmission is between September and April and an increase in the number of cases is expected in the coming weeks. The risk of spread for the current outbreak to other areas of the country, especially urban centers, is high, taking into account the proximity of the affected areas to the country's capital and the frequent population movement. Though the country has experience in managing and coordinating outbreak response, having responded to multiple outbreaks in the past, the existence of other concurrent health emergencies such as COVID-19 and the humanitarian crisis (food and nutrition crisis in the great South) in the country hamper the health system's ability to effectively cope with the health challenges being faced in the country.

PROPOSED ACTIONS

- It is essential that Madagascar builds on good practices that led to the successful management of previous outbreaks and taking into consideration some key actions recommended then. Actions should include early identification and rapid elimination of infection sources including vectors, and protecting health workers by training them on infection prevention and control measures. Health workers who are in direct contact with pneumonic plague cases should use recommended protective measures and take antibiotic chemoprophylaxis. Surveillance activities should be strengthened to identify and monitor new cases and contacts. Risk communication and community engagement activities should be performed during and after the outbreaks.

EVENT DESCRIPTION

Nigeria continues to report sporadic cases of monkeypox since the outbreak was declared in September 2017 following the identification of the first laboratory confirmed case. During the month of August 2021 (epidemiological weeks 31-34), nine new suspected cases were reported and six were confirmed from Bayelsa, Delta, Federal Capital Territory (FCT), Niger, Ogun, and Rivers states. As compared to July 2021 when four suspected cases were reported, Nigeria has seen a 50% increase in August. Niger and Ogun states reported their first monkey pox cases since 2017.

Since the beginning of the year, a total of 79 suspected cases have been reported in Nigeria. Of the suspected cases, 23 cases (29%) have been laboratory confirmed from eight states including Bayelsa (4), Delta (7), Edo (1), FCT (1), Lagos (4), Niger (1), Ogun (1), and Rivers (4). No associated deaths have been reported in the country during this year.

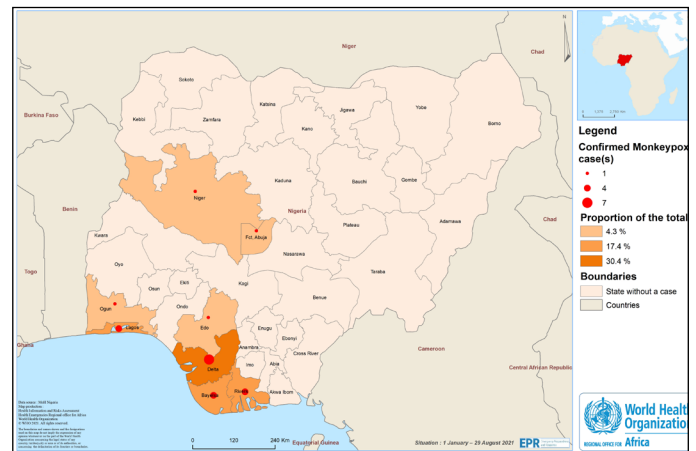
Since the beginning of the outbreak in September 2017 to 31 August 2021, a total of 493 suspected cases have been reported from 31 states in the country. Of the suspected cases, only 215 (43.6%) have been confirmed with Rivers (23.7%), Bayelsa (19.1%), Lagos (13.0%), and Delta (12.6%) states confirming the most cases during the entire outbreak. A total of eight deaths (CFR 3.7%) have been reported since the beginning of this outbreak. From the 215 confirmed cases, individuals aged 21 - 40 years were the most affected accounting for 68% of confirmed cases although suspected cases have been reported in all age groups. Males were disproportionately affected by this outbreak, with a male to female ratio of 2.2:1 among cases.

On 17 July 2021, the International Health Regulations national focal point of the United States (US) notified WHO of a confirmed monkeypox case in a traveller returning from Nigeria. During his stay, the case visited Lagos Island of Lagos state and Ibadan city of Oyo state and initially felt signs and symptoms including fever, vomiting, and a mild cough on 30 June and subsequently developed a painful rash on 7 July. Following the case's arrival to the US on 9 July, he felt further symptoms of fever, cough, abdominal pain, and disseminated rash on the head, face, torso, and genitals. He sought medical attention at a hospital in Dallas, Texas on 13 July where he was immediately placed in isolation. He was preliminarily confirmed by polymerase chain reaction (PCR) testing methods to have monkeypox on 14 July 2021 and further confirmed for West African clade Monkeypox virus by the Poxvirus and Rabies Branch Laboratory at the US Centers for Disease Control and Prevention. The source of the infection is still unknown. Human monkeypox in travellers from Nigeria has been documented on seven previous occasions since 1978.

PUBLIC HEALTH ACTIONS

- A multi-agency, multi-disciplinary Technical Working Group is coordinating support at the Nigeria Centre for Disease Control (NCDC). These continue to monitor cases and strengthen preparedness/response capacity across the country.

Geographical distribution of Monkeypox cases in Nigeria, 1 January - 29 August 2021.



- Surveillance for suspected cases has been enhanced and is ongoing in the affected states.
- The National Reference Laboratory in Abuja continues to conduct confirmatory tests for Monkeypox.
- There has been engagement of community to support local government area surveillance teams and officers.

SITUATION INTERPRETATION

Sporadic cases of monkeypox continue to be reported in many states of Nigeria. In 2021, Nigeria has thus far confirmed almost three times as many cases than the number reported in all of 2020 (23 in 2021 vs 8 in 2020), however the total number of cases has not yet surpassed those from 2017-2019. Surveillance should involve the one health approach to focus on potential sources of transmission (primarily via rodents, marsupials, primates or handling of bushmeat) and enhance knowledge of risk in the affected states. The recent exportation of a case to the United States highlights the risk of spread of the disease to other countries, which isn't the first case to be exported.

PROPOSED ACTIONS

- Since the public health workforce is limited due to the COVID-19 response, it is important to engage community members not just for surveillance, but for insight into the potential sources of monkeypox transmission to inform on mitigation measures. At LGA level, there is a need to improve surveillance with a limited public health workforce. It is also essential to intensify efforts around risk communication activities and advocacy, especially in the most affected states, in order to improve public awareness. As Nigeria continues to improve detection and response capacities for monkeypox cases, countries are advised to heighten surveillance at points-of-entry to ensure early detection of imported cases.

All events currently being monitored by WHO AFRO

Country	Event	Grade	Date notified to WCO	Start of reporting period	End of reporting period	Total cases	Cases Confirmed	Deaths	CFR
New Events									
Democratic Republic of the Congo	Meningitis	Grade 2	6-Sep-21	1-Jun-21	11-Sep-21	330	8	151	45.80%
On 28 July 2021, an alert was reported in the locality of Panga, Banalia territory, in Kisangani district in DRC as a result of an illness with signs similar to those of meningitis. As of 11 September 2021, 330 cases have been reported including 151 deaths (CFR= 46%). Eight samples out of 29 collected overall have been confirmed for <i>Neisseria meningitidis</i> serogroup W.									
Nigeria	Monkeypox	Ungraded	9-Sep-21	1-Jan-21	31-Aug-21	79	23	0	0.00%
According to the Nigeria Centre for Disease Control (NCDC), in August 2021, a total of nine suspected monkeypox cases, six confirmed cases and 0 deaths were reported from six states. In 2021, 79 suspected cases have been reported between January and August 31, 2021. Of the suspected cases, 23 were confirmed from eight states Delta (7), Lagos (4), Bayelsa (4), Rivers (4), Edo (1), FCT (1), Niger (1), Ogun (1) and, no deaths recorded from all States.									
Ongoing Events									
Algeria	COVID-19	Grade 3	25-Feb-20	25-Feb-20	12-Sep-21	200 068	200 068	5 578	2.80%
From 25 February 2020 to 12th September 2021, a total of 200 068 confirmed cases of COVID-19 with 5 578 deaths (CFR 2.7%) have been reported from Algeria. A total of 136 662 cases have recovered.									
Angola	COVID-19	Grade 3	21-Mar-20	21-Mar-20	12-Sep-21	50 446	50 446	1 339	2.70%
The first COVID-19 confirmed case was reported in Angola on 21 March 2020. As of 12th September 2021, a total of 50 446 confirmed COVID-19 cases have been reported in the country with 1 339 deaths and 44 652 recoveries.									
Angola	Measles	Ungraded	4-May-19	1-Jan-21	6-May-21	241	81	1	0.40%
In 2020, Angola reported a total of 1 220 suspected cases between January and August of which 1 008 have been confirmed, and 5 deaths (CFR 0.4%). From January to Epi week 18 2021, Angola reported 241 suspected cases have been reported in 12 health districts of which 81 were confirmed and one died (CFR 1.2%), 40.7% < 5 years, 24.6% 5- 9 years and. Five districts with confirmed measles outbreaks : Banga, Caimbambo, Uige, Cuito Samba and Caju. 96.0% are either zero dose or with unknown vaccination status									
Angola	Poliomyelitis (cVDPV2)	Grade 2	8-May-19	1-Jan-19	10-Sep-21	133	133	0	0.00%
No case of circulating vaccine-derived poliovirus type 2 (cVDPV2) was reported this week. There were 3 cases reported in 2020. The total number of cases reported in 2019 remains 130. These cases are from several outbreaks which occurred in 2019.									
Benin	COVID-19	Grade 3	17-Mar-20	16-Mar-20	7-Sep-21	19 481	19 841	141	0.70%
The Ministry of Health in Benin announced the first confirmed case of COVID-19 on 16 March 2020. As of 07 September 2021, a total of 19 841 cases have been reported in the country with 141 deaths and 15 837 recoveries.									
Benin	Meningitis	Ungraded	1-Jun-21	1-Jan-21	25-Jul-21	381	82	29	7.60%
A total of 381 cases and 29 deaths (CFR=7.6%) resulting from meningitis were reported from Week 1 to week 30 of 2021 in Benin. Five districts are on alert and one district reported passing the epidemic threshold.									
Benin	Poliomyelitis (cVDPV2)	Grade 2	8-Aug-19	8-Aug-19	10-Sep-21	13	13	0	0.00%
No new cases of circulating vaccine-derived poliovirus type 2 (cVDPV2) were reported this week. Two cases have been reported so far in 2021. There were three cVDPV2 cases reported in 2020, and 8 in 2019. These cases are all linked to the Jigawa outbreak in Nigeria.									
Botswana	COVID-19	Grade 3	30-Mar-20	28-Mar-20	6-Sep-21	163 665	163 665	2 325	1.40%
On 30 March 2020, the Minister of Health and Wellness in Botswana reported three confirmed cases of COVID-19. As of 6 September 2021, a total of 163 665 confirmed COVID-19 cases were reported in the country including 2 325 deaths and 158 338 recovered cases.									
Burkina Faso	Humanitarian crisis	Grade 2	1-Jan-19	1-Jan-19	31-Jul-21	-	-	-	-
Since 2015, the security situation in the Sahel and East of Burkina Faso has gradually deteriorated as a result of attacks by armed groups. This has resulted in mass displacement of a total of 1 368 164 internally displaced persons as of 31 July 2021 in all 13 regions in the country. More than 56K people became IDPs during July 2021, increasing 4.1% compared to the previous month. The regions most affected were Central North, Sahel, Eastern, and Northern. The presence of jihadist groups and self-defense units have created an increasingly volatile security situation. Attacks on the health system, intimidation and kidnapping of health workers, theft of medicines, continue to be reported. According to the World Food Programme, 3.5 million people are in need of humanitarian assistance and 2.87 million people are food insecure as of March 2021.									
Burkina Faso	Cholera	Ungraded	15-Aug-21	18-Aug-21	31-Aug-21	2	2	0	0.00%
The WHO office was informed by the Ministry of Health in the evening of 15 August 2021, of the detection on August 15, 2021, in the morning of a suspected case of cholera in the health facility of the village of Tanwalbougou, health district of Fada in the Eastern region, bordering Niger where an outbreak of cholera is ongoing. This is a 46-year-old tanker driver of Malian nationality from Niamey in Niger. The patient and his 4 contact persons have been isolated, and the patient was treated. The sample taken and sent to Ouagadougou at National Laboratory of Public Health confirmed <i>Vibrio cholerae</i> O1 Ogawa, the same serotype and serogroup with the one identified in Niger for the ongoing cholera outbreak. A second case of cholera confirmed by the regional laboratory on August 29, 2021: also, a tanker driver of Malian nationality, coming from Niamey in Niger after staying in Zinder and Koni / Niger. He was treated, cured, and released in isolation on August 31 08/31/2021. The first confirmed case was discharged on August 22, 2021.									

Country	Event	Grade	Date notified to WCO	Start of reporting period	End of reporting period	Total cases	Cases Confirmed	Deaths	CFR
Burkina Faso	COVID-19	Grade 3	10-Mar-20	9-Mar-20	10-Sep-21	13 942	13 942	171	1.20%
Between 9 March 2020 and 10th September 2021, a total of 13 942 confirmed cases of COVID-19 with 171 deaths and 13 606 recoveries have been reported from Burkina Faso.									
Burkina Faso	Poliomyelitis (cVDPV2)	Grade 2	1-Jan-20	1-Jan-20	10-Sep-21	67	67	0	0.00%
No new cases of circulating vaccine-derived poliovirus type 2 (cVDPV2) were reported this week. There is two case reported in 2021, and in 2020, 65 were reported. The country is affected by different outbreaks, one linked to the Jigawa outbreak in Nigeria and one to the Savanes outbreak in Togo.									
Burundi	COVID-19	Grade 3	31-Mar-20	18-Mar-20	8-Sep-21	14 189	14 189	12	0.10%
On 31 March 2020, the Minister of Health in Burundi reported the first two confirmed cases of COVID-19. As of 08 September 2021, the total number of confirmed COVID-19 cases is 14 189, including 12 deaths and 13 344 recovered.									
Burundi	Measles	Ungraded	23-Mar-20	1-Jan-21	15-Aug-21	431	330	0	0.00%
The measles epidemic has been declared since November 2019 in camps hosting Congolese refugees and then spread to other communities. In 2020, a total of 1 968 cases were reported in 46 of the country's 47 districts throughout 2020, 1 585 confirmed, 6 deaths. As of week 32 of 2021, Burundi has reported a total of 431 suspected cases, 330 reported by case-by-case surveillance and no death, 63 confirmed by IgM+ 261 by epidemiological link and 6 clinical cases. Six districts are currently in outbreak : Bubanza, Mpanda, Bugarama, Muyinga, Rumonge and Cibitoke.									
Cameroon	Humanitarian crisis (Far North, North, Adamawa & East)	Protracted 2	31-Dec-13	27-Jun-17	31-Jul-21	-	-	-	-
According to OCHA reports, an estimated 1.2 million people need assistance, 322 000 people are internally displaced, 67K are camp refugees, and 46K are refugees in the region not in camps. Specifically, there have been 321 886 IDPs registered in Far North as of 31 July 2021. Increased attacks from non-state armed groups (NSAGs) in the Logone and Chari, and Mayo Tsanaga divisions have led to human rights violations against civilian populations. The resulting insecurity negatively affected humanitarian access where workers have been threatened and harassed. A total of 34 security incidents were recorded during the reporting period.									
Cameroon	Humanitarian crisis (NW & SW)	Protracted 2	1-Oct-16	27-Jun-18	31-Jul-21	-	-	-	-
According to reports from UNHCR, 711 056 IDPs have been registered as of 31 July 2021. OCHA also reports an estimated 333.9K returnees, and 67.4K Cameroon refugees in Nigeria as of May 2021. There have continued to be reports of targeted attacks on various groups such as traditional leaders, school staff, students, and humanitarian workers. An inter-agency mission in Momo Division revealed an increase in the use of improvised explosive devices (IEDs), carjacking, and clashes between security forces and NSAGs, leading to civilian population displacement. The priorities for IDPs are food, healthcare, SGBV response, shelter, and non-food items.									
Cameroon	Cholera	Ungraded	1-Jan-21	5-Aug-21	29-Aug-21	13	-	1	7.70%
Since the beginning of this year, cases of Cholera ,positives for Rapid Tests (RDT) have been notified in the North-West region and suspected cases of Cholera notified in the North region. As of August 15, 2021, a total of 13 cases with 1 death (CFR = 7.7%) have already been recorded. These numbers will be adjusted once new updates are received. The intensification of disease surveillance as well as the management of notified cases are ongoing									
Cameroon	COVID-19	Grade 3	6-Mar-20	6-Mar-20	18-Aug-21	83 425	83 425	1 350	1.60%
The Cameroon Ministry of Health announced the confirmation of the first COVID-19 case on 6 March 2020. As of 18 August 2021, a total of 83 425 cases have been reported, including 1 350 deaths and 81 326 recoveries.									
Cameroon	Measles	Ungraded	2-Apr-19	1-Jan-21	11-Aug-21	1 509	384	30	2.00%
From Epi week 1 to Epi week 30 of 2021, Cameroon has reported 1 509 suspected with 30 deaths (CFR 1.9%). Out of 825 investigated, 606 with blood sample, 384 was positive including 168 cases were IgM+, 77 clinically compatible and 139 epidemiologically linked; 64% of the children are below 5 years of age and only 36% known to be vaccinated with at least 1 dose of MCV. Seventeen districts with confirmed outbreak spread across 7 regions of country.									
Cameroon	Poliomyelitis (cVDPV2)	Grade 2	1-Jan-20	1-Jan-20	10-Sep-21	7	7	0	0.00%
No case of circulating vaccine-derived poliovirus type 2 (cVDPV2) was reported this week. There were seven cases reported in 2020.									
Cameroon	Yellow fever	Ungraded	7-Feb-21	4-Jan-21	5-Sep-21	19	19	7	36.80%
From 1 January to 5 September 2021, a total of 16 presumptive cases of yellow fever tested positive by plaque reduction neutralization test (PRNT) and three by PCR at the Centre Pasteur in Cameroon (CPC), of which seven deaths were recorded. These cases originated from seven different regions with a total of 15 health districts (HDs) affected: Adamaoua region (Ngaoundere rural HD), Centre region (Eséka HD), Far North region (Maga, Mogode, Yagoua, Kousséri, and Gouffey HDs), Littoral region (Yabassi, Cité des palmiers HDs), North region (Guider, Garoua 1 HDs), and North-West region (Bamenda HD), and West region (Dschang, Bafang, and Malentouen HDs).									
Cape Verde	COVID-19	Grade 3	19-Mar-20	18-Mar-20	12-Sep-21	36 588	36 588	321	0.90%
The first COVID-19 confirmed case was reported in Cabo Verde on 19 March 2020. As of 12 September 2021, a total of 36 588 confirmed COVID-19 cases including 321 deaths and 35 212 recoveries were reported in the country.									

Country	Event	Grade	Date notified to WCO	Start of reporting period	End of reporting period	Total cases	Cases Confirmed	Deaths	CFR
Central African Republic	Humanitarian crisis	Protracted 2	11-Dec-13	11-Dec-13	26-Aug-21	-	-	-	-
According to OCHA figures, 2.8 million people are in need of assistance, 690 705 people are internally displaced as of 31 July 2021, and 699K persons are refugees in neighboring countries. In July 2021, 64 110 new IDPs were registered mostly in Basse-Kotto, Haut-Mbomou and Ouaka Prefectures. Displacements were mostly caused by clashes between the Central African Armed Forces (FACA) and their allies against armed groups (particularly in the Bouar, Bedamara and Paoua Sub-prefectures) as well as fear of abuses by armed groups. Some populations perceiving imminent fighting are moving as a precautionary measure to find refuge in safer areas. A total of 90 083 returns were reported as 31 July 2021, mainly in the Mbomou, Nana-Mambéré, Nana-Gribizi, Basse-Kotto and Bamingui-Bangoran Prefectures. The recapture of towns that had been occupied by armed groups has led to the gradual return of the population to certain localities.									
Central African Republic	COVID-19	Grade 3	14-Mar-20	14-Mar-20	2-Sep-21	11 309	11 309	100	0.90%
The Ministry of Health and population announced the confirmation of the first COVID-19 case in the Central African Republic on 14 March 2020. As of 02 September 2021, a total of 11 309 confirmed cases, 100 deaths and 11 125 recovered were reported.									
Central African Republic	Measles	Grade 2	15-Mar-19	1-Jan-21	22-Aug-21	2 049	230	7	0.30%
From 1st January up to 22 August 2021 : 2 049 suspected cases have been reported, 170 cases with blood samples out of a total 608 investigated, 230 confirmed cases (62 IgM+ cases, 157 by epidemiological link and 11 compatible cases) and 7 deaths (CFR : 0.2%). Seven health districts (out of 35) have reached the epidemic threshold (Berbérati, Sangha-Mbaéré; Nanga-Boguila, Batangafo, Mbaiki, Nana Gebrizi and Vakaga); 49% are children < 5 years; 42% not vaccinated. From the beginning of outbreak in 2019 to 19 August 2021, a total of 35 468 suspected cases have been notified and 197 deaths (CFR : 0.56%) within affected districts.									
Central African Republic	Poliomyelitis (cVDPV2)	Grade 2	24-May-19	24-May-19	10-Sep-21	25	25	0	0.00%
No new cases of circulating vaccine-derived poliovirus type 2 (cVDPV2) were reported this week. There were 4 cVDPV2 cases reported in 2020 and 21 cases in 2019 from several outbreaks.									
Chad	COVID-19	Grade 3	19-Mar-20	19-Mar-20	12-Sep-21	5 016	5 016	174	3.50%
The first COVID-19 confirmed case was reported in Chad on 19 March 2020. As of 12th August 2021, a total of 5 016 confirmed COVID-19 cases were reported in the country including 174 deaths and 4 819 cases who have recovered.									
Chad	Leishmaniasis	Ungraded	8-Sep-20	16-Oct-20	31-May-21	122	14	6	4.90%
Since January 1, 2018, a total of 122 cases have been reported by 3 provinces (N'Djamena, Borkou and Tibesti). N'Djamena's cases are from Miski's self-referral. For the year 2020 the country registered 74 cases including 3 deaths. Since the beginning of 2021 up to 21 May 2021, 25 cases have been reported including 15 in Bardai, 7 in Faya and 3 in N'djamena. 14 cases are confirmed by PCR and rapid tests.									
Chad	Measles	Ungraded	24-May-18	1-Jan-21	11-Aug-21	2 043	200	8	0.40%
In 2020, Chad reported 8 785 cases, with 363 confirmed cases and 41 deaths. Since 1 January 2021 up to Epi week 30, there have been reported 2 043 suspected cases from 93 out of 129 districts in the country (71% of districts), 405 cases investigated with blood samples recorded, 200 of which were confirmed by IgM and 08 deaths from 4 districts (CFR 0.4%), 21 districts in epidemic in 2021.									
Chad	Poliomyelitis (cVDPV2)	Grade 2	18-Oct-19	9-Sep-19	10-Sep-21	114	114	0	0.00%
No new cases of circulating vaccine-derived poliovirus type 2 (cVDPV2) were reported in this week. There were 106 cVDPV2 cases reported in 2020 from three different outbreaks. There were 8 cases reported in 2019. The risk of further cVDPV2 spread across the Lake Chad subregion remains high.									
Comoros	COVID-19	Grade 3	30-Apr-20	30-Apr-20	12-Sep-21	4 097	4 097	147	3.60%
The first case of confirmed COVID-19 was notified on 30 April 2020 in Comoros. As of 12 September 2021, a total of 4 097 confirmed COVID-19 cases, including 147 deaths and 3 931 recoveries were reported in the country.									
Congo	COVID-19	Grade 3	14-Mar-20	14-Mar-20	2-Sep-21	13 701	13 701	183	1.30%
The Government of Congo announced the confirmation of the first case of COVID-19 in Congo on 14 March 2020. As of 02 September 2021, a total of 13 701 cases including 183 deaths and 13 050 recovered cases have been reported in the country.									
Congo	Poliomyelitis (cVDPV2)	Grade 2		29-Jan-21	10-Sep-21	4	4	0	0.00%
No new cases of circulating vaccine-derived poliovirus type 2 (cVDPV2) were reported this week. So far, 2 cases have been reported in 2021. There were two cases reported in 2020.									
Côte d'Ivoire	COVID-19	Grade 3	11-Mar-20	11-Mar-20	12-Sep-21	58 009	58 009	515	0.90%
Since 11 March 2020, a total of 58 009 confirmed cases of COVID-19 have been reported from Côte d'Ivoire including 515 deaths, and a total of 55 925 recoveries.									
Côte d'Ivoire	Poliomyelitis (cVDPV2)	Grade 2	29-Oct-19	29-Oct-19	10-Sep-21	61	61	0	0.00%
No new cases of circulating vaccine-derived poliovirus type 2 (cVDPV2) reported this week. The number of 2020 cases is still 61.									

Country	Event	Grade	Date notified to WCO	Start of reporting period	End of reporting period	Total cases	Cases Confirmed	Deaths	CFR
Democratic Republic of the Congo	Humanitarian crisis	Protracted 3	20-Dec-16	17-Apr-17	27-Jun-21	-	-	-	-
As of 27 June 2021, there are an estimated 5.2 million people internally displaced and 19.6 million are in need of emergency food assistance in the entire country. In Ituri province alone, there were 1 375 071 internally displaced persons, however, during the past 18 months 1 097 108 people have returned to their places of origin. The situation of displaced families in Boga and Chiabi is precarious, marked by lack of food, poor housing conditions and difficulties in accessing health care. In North Kivu province more than 6 039 households have been identified in Goma and Nyiragongo in temporary regroupment sites. Another 7 500 people are with host families in Minova, Rutshuru and Kirotshe, following the Nyiragongo volcano eruption crisis of 22 May 2021. A total of 1 191 shelters were built to accommodate the victims at the temporary site in Nyiragongo territory.									
Democratic Republic of the Congo	Cholera	Grade 3	16-Jan-15	1-Jan-20	27-Jun-21	3 516	-	93	2.60%
In 2021, from epidemiological week 1 to 25 (ending 27 June 2021), 3 516 suspected cholera cases including 93 deaths (case-fatality rate 2.6%) were recorded in 76 health zones across 14 provinces of the Democratic Republic of the Congo. This is a significant decrease (70.1%) in the number of weekly cholera cases compared to the same period in 2020. In 2020, a total of 30 304 suspected cholera cases including 514 deaths (case fatality 1.7%) were reported in 179 health zones across 23 provinces.									
Democratic Republic of the Congo	COVID-19	Grade 3	10-Mar-20	10-Mar-20	9-Sep-21	56 216	56 214	1 068	1.90%
Since the start of the COVID-19 outbreak, declared on 10 March 2020, a total of 56 214 confirmed cases and two probable case, including 1 068 deaths have been reported. A total of 47 142 people have recovered.									
Democratic Republic of the Congo	Monkeypox	Ungraded	n/a	1-Jan-20	8-Aug-21	8 780	39	295	3.40%
Since epidemiological week 1 up to week 31 in 2021, 2 523 cases have been reported with 66 deaths. Between epidemiological week 1 and week 53 of 2020, a total of 6 257 suspected cases including 229 deaths (CFR 3.7%) were reported in 133 health zones from 17 out of 26 provinces in the country. During the same period in 2019, 5 288 suspected cases and 107 deaths (CFR 2.0%) were reported in 132 health zones from 18 provinces. Overall, there was a regressive trend from epidemiological week 33 to 53 of 2020 (276 cases vs 76 cases).									
Democratic Republic of the Congo	Plague	Ungraded	12-Mar-19	1-Jan-20	8-Aug-21	694	-	57	8.20%
From 22 April 2021, a cluster of deaths due to suspected pneumonic plague were recorded in the health zone of Fataki, Ituri province, Democratic Republic of the Congo. The patients presented with headache, fever, chills, coughing sometimes with blood, dyspnoea, vomiting blood, etc. An investigation was conducted during which suspected cases were identified and samples taken to be shipped to the Institut National de Recherche Biomédicale (INRB) in Kinshasa for confirmatory testing. From epidemiological week 1 to 31, 2021 (ending on 8 August), 118 suspected plague cases including 13 deaths were reported in eight health zones in Ituri province. From January to December 2020, 461 suspected plague cases of which 31 deaths were reported in eight health zones of Ituri. The health zones of Biringi, Rethy, and Aru reported the most cases.									
Democratic Republic of the Congo	Poliomyelitis (cVDPV2)	Grade 2	15-Feb-18	1-Jan-18	10-Sep-21	200	200	0	0.00%
No case of circulating vaccine-derived poliovirus type 2 (cVDPV2) was reported this week. There are 10 cases reported in 2021 so far. The total number of 2020 cases remains at 81.									
Democratic Republic of the Congo	Typhoid fever	Ungraded	1-Jul-21	1-Jan-21	31-Jul-21	716 494	883	44	0.00%
In 2021, from Epi week 1 to 30, 716 494 suspected cases of typhoid fever have been reported including 883 confirmed cases (606 in Popokabaka health zone and 277 in Mushie health zone), 44 (21 in Popokabaka health zone and 23 in Mushie health zone) deaths (CFR 0.0%). In 2020, a total of 715 920 suspected cases of typhoid fever were reported, including 178 deaths (CFR 0.0%).									
Democratic Republic of the Congo	Yellow Fever	Ungraded	21-Apr-21	21-Apr-21	18-Jul-21	2	2	0	0.00%
On 18 July 2021, two yellow fever cases tested positive by Plaque Reduction Neutralization Test (PRNT) at Centre Pasteur in Cameroon (CPC). The first case is a 34-year-old male from the Abuzi health zone, North Ubangi province, Democratic Republic of the Congo whose date of symptom onset was 20 February 2021 with fever, vomiting, abdominal pain, back pain and physical asthenia. Jaundice appeared on 25 February. The second case is a 47-year-old female unvaccinated against yellow fever from Ango health zone, Bas Uele province. He first exhibited symptoms on 7 May 2021. In addition, confirmatory results are pending for three other presumptive positive cases from Equateur, Kinshasa and North Ubangi provinces.									
Equatorial Guinea	COVID-19	Grade 3	14-Mar-20	14-Mar-20	10-Sep-21	10 498	10 498	131	1.20%
The Ministry of Health and Welfare announced the first confirmed COVID-19 case on 14 March 2020. As of 10 September 2021, a total of 10 498 cases have been reported in the country with 131 deaths and 9 152 recoveries.									
Eritrea	COVID-19	Grade 3	21-Mar-20	21-Mar-20	10-Sep-21	6 655	6 655	40	0.60%
The first COVID-19 confirmed case was reported in Eritrea on 21 March 2020. As of 10 September 2021, a total of 6 655 confirmed COVID-19 cases with 40 deaths were reported in the country. A total of 6 611 patients have recovered from the disease.									

Country	Event	Grade	Date notified to WCO	Start of reporting period	End of reporting period	Total cases	Cases Confirmed	Deaths	CFR
Eswatini	COVID-19	Grade 3	13-Mar-20	13-Mar-20	12-Sep-21	44 863	44 863	1 172	2.60%
The first case of COVID-19 was confirmed in the kingdom of Eswatini on 13 March 2020. As of 12 September 2021, a total of 44 863 cases have been reported in the country including 42 510 recoveries. A total of 1 172 associated deaths have been reported.									
Ethiopia	Humanitarian crisis (Conflict in Tigray)	Grade 3	4-Nov-20	4-Nov-20	13-Aug-21	-	-	-	-
According to reports from OCHA, an estimated 5.2 million people are in need of humanitarian assistance and more than 63K refugees have fled to Sudan since fighting began in November 2020. Conflict continues in the Tigray area with spill over from activity in neighbouring Afar and Amhara regions. An estimated 76 500 people were displaced from Afar and 200K from Amhara due to movement of Tigray forces. Despite the fighting, humanitarian access has improved with 75% of the area becoming accessible though logistical and operational problems persist with the lack of banking services, cash, fuel, electricity and telecommunications. Over 400K people are living in famine-like situations, with increasing risks of famine due to the inability of crop production over the past 9 months. Malnutrition rates are far above emergency thresholds among screened children under 5 years (25-30% or higher) and pregnant and lactating women (45-50%).									
Ethiopia	COVID-19	Grade 3	13-Mar-20	13-Mar-20	12-Sep-21	323 104	323 104	4 929	1.50%
Since the confirmation of the first case on 13 March 2020, Ethiopia has confirmed a total of 323 104 cases of COVID-19 as of 12th August 2021, with 4 929 deaths and 290 748 recoveries.									
Ethiopia	Measles	Ungraded	14-Jan-17	1-Jan-21	27-Aug-21	1 795	984	4	0.20%
In 2021, as of 20 August (Epi week 35), a total of 1 795 cases have been reported of which 984 have been confirmed (770 epi-link, 248 IgM and 41 measles compatible) and 4 deaths recorded (CFR 0.4%). Out of the 1 795 suspected cases, 920 were under 5 years of age, 595 were between 5 and 14 years of age and 280 were over 15 years of age.									
Ethiopia	Poliomyelitis (cVDPV2)	Grade 2	24-Jun-19	20-May-19	10-Sep-21	74	74	0	0.00%
No case of circulating vaccine-derived poliovirus type 2 (cVDPV2) was reported this week. 9 cases have been reported so far in 2021. The total number of cases for 2020 is 38 and 2019 is 15.									
Gabon	COVID-19	Grade 3	12-Mar-20	12-Mar-20	10-Sep-21	26 638	26 638	170	0.60%
On 12 March 2020, the Ministry of Health announced the confirmation of the first COVID-19 case in the country. As of 10 September 2021, a total of 26 638 cases including 170 deaths and 25 893 recoveries have been reported in the country.									
Gambia	COVID-19	Grade 3	17-Mar-20	17-Mar-20	9-Sep-21	9 848	9 848	328	3.30%
The first COVID-19 confirmed case was reported in the Gambia on 17 March 2020. As of 9 Sep 2021, a total of 9 848 confirmed COVID-19 cases including 328 deaths, and 9 457 recoveries have been reported in the country.									
Ghana	COVID-19	Grade 3	12-Mar-20	12-Mar-20	8-Sep-21	123 521	123 521	1 096	0.90%
As of 8 Sep 2021, a total of 123 521 confirmed COVID-19 cases have been reported in Ghana. There have been 1096 deaths and 117 352 recoveries reported.									
Ghana	Meningitis	Ungraded	1-Jan-21	1-Jan-21	25-Jul-21	254	-	3	1.20%
Since the beginning of the year 2021, 254 cases of meningitis have been reported with 3 deaths (CFR=1.2%). The Nandom district in the Upper West Region crossed the epidemic threshold and four other districts are on alert (Lawra, Lambussie, Nadowli-Kaleo, Wa Municipal). In Ghana, the Streptococcus pneumoniae is the germ mostly identified by the country laboratory.									
Ghana	Poliomyelitis (cVDPV2)	Grade 2	9-Jul-19	8-Jul-19	10-Sep-21	31	31	0	0.00%
No new cases of circulating vaccine-derived poliovirus type 2 (cVDPV2) reported this week. There were 12 cases reported in 2020, while the total number of 2019 cases remain 19. One cVDPV2 positive environmental sample was reported in the Eastern province.									
Guinea	COVID-19	Grade 3	13-Mar-20	13-Mar-20	11-Sep-21	30 047	30 047	490	1.60%
The Ministry of Health in Guinea announced the first confirmed case of COVID-19 on 13 March 2020. As of 11 September 2021, a total of 30 047 cases including 28 038 recovered cases and 490 deaths have been reported in the country.									
Guinea	Lassa Fever	Ungraded	8-May-21	8-May-21	17-Aug-21	5	5	4	80.00%
To date, there have been a total of 5 confirmed cases and 4 deaths (CFR=80%): the first case (man of 23 years old) was notified on 8 May 2021 at the Yomou prefecture hospital, a resident of Yomou prefecture. The patient was also confirmed to be positive for COVID-19 and later died. Contact tracing of 88 people was done, and no secondary cases found. On 17 June 2021, a second confirmed case (woman of 75 years old) was detected at Nzérékoré Regional Hospital, this case was from Beyla prefecture and died the same day. A listing of 111 contacts have been done for follow up. On 28 June 2021 a third case was confirmed (man of 25 years old), a resident of Nzerekore prefecture, 57 contacts listed are under follow up. On 1 Jul 2021 a fourth case was confirmed (a man of 52 years old), resident also of Nzerekore prefecture, a listing of 21 contacts was done and are being followed. However, the prefecture of Bheeta is regarded as active, with the prefectures of Yomou-Centre, Péla, Yomou and Bignamou on alert.									
Guinea	Marburg Virus Disease	Grade 2	4-Aug-21	4-Aug-21	9-Aug-21	1	1	1	100.00%
On 6 August 2021, WHO was notified by the Ministry of Health of Guinea of a confirmed case of Marburg virus disease (MVD) in Guéckédou prefecture in Nzérékoré Region of south-western Guinea. The case, a male, had onset of symptoms on 30 July 2021. On 1 August 2021 he attended a small health facility near his village of residence with symptoms of fever, headache, fatigue, abdominal pain, and gingival haemorrhage. A rapid diagnostic test performed for malaria was negative. On 2 August 2021 he died in the community and the alert was raised by the sub-prefecture public health care facility to the prefectorial department of health in Gueckedou. A post-mortem oral swab sample was collected and sent on the same day to the viral haemorrhagic fever (VHF) reference laboratory in Guéckédou. The real time PCR test result on 3 August confirmed Marburg virus disease and was negative for Ebola. On 4 August, the sample was sent the National Reference Laboratory in Conakry who provided reconfirmation by real-time PCR that the sample was positive for Marburg disease.									

Country	Event	Grade	Date notified to WCO	Start of reporting period	End of reporting period	Total cases	Cases Confirmed	Deaths	CFR
Guinea	Measles	Ungraded	9-May-18	1-Jan-21	19-Jul-21	1 393	102	4	0.30%
In 2021, as of 19 July (Epi week 27), 1 393 suspected cases have been reported, 279 samples taken, 233 samples tested of which 102 tested positive, 120 negative and 11 undetermined; four deaths have been reported. In 2020 at the same period, 5 835 suspected cases, 820 cases sampled, 805 samples tested of which 512 positive, 247 negative and 46 undetermined; 15 deaths have been reported. Since 2020, a total of 7 228 suspected cases, 1 099 tests analysed, 614 confirmed cases, 19 deaths have been reported.									
Guinea	Poliomyelitis (cVDPV2)	Grade 2	22-Jul-20	22-Jul-20	10-Sep-21	50	50	0	0.00%
No new cases of circulating vaccine-derived poliovirus type 2 (cVDPV2) were reported this week. So far, we have 6 cases in 2021. The total number of 2020 cases has been corrected to 44.									
Guinea-Bissau	COVID-19	Grade 3	25-Mar-20	25-Mar-20	12-Sep-21	6 022	6 022	125	2.10%
On 25 March 2020, the Ministry of Health of Guinea Bissau reported the first COVID-19 confirmed case in the country. As of 12th September 2021, the country has reported 6 022 confirmed cases of COVID-19 with 5 144 recoveries and 125 deaths.									
Kenya	COVID-19	Grade 3	13-Mar-20	13-Mar-20	12-Sep-21	243 725	243 725	4 906	2.00%
On 12 March 2020, the Ministry of Health announced the confirmation of one new COVID-19 case in the country. As of 12th September 2021, 243 725 confirmed COVID-19 cases including 4 906 deaths and 232 918 recoveries have been reported in the country.									
Kenya	Dengue	Ungraded	27-Apr-21	1-Jan-21	26-Aug-21	976	36	2	0.20%
The outbreak has been reported in Mombasa and Mandera Counties, recording 976 cases with 36 confirmed and 2 deaths reported (CFR 0.2 percent).									
Kenya	Leishmaniasis	Ungraded	31-Mar-19	3-Jan-20	26-Aug-21	951	951	10	1.10%
Since January 2020, a total of 951 visceral leishmaniasis confirmed cases with 10 deaths (CFR 1.1 percent), have been reported in seven counties namely: Marsabit, Garissa, Kitui, Baringo, West Pokot, Mandera and Wajir. The outbreak is active in three counties, Mandera, West Pokot and Wajir.									
Kenya	Measles	Ungraded	6-May-19	20-Oct-19	20-Aug-21	625	31	1	0.20%
As 20 August 2021 (Epi week 32), a total of 625 cases was reported, 31 confirmed cases with one death (CFR 0.2 %) for 2 counties which has reported cases in 2021, West Pokot (4 sub counties affected) and Garissa (1 sub county affected). In West Pokot, the outbreak has been continuous from 2019.									
Kenya	Poliomyelitis (cVDPV2)	Grade 2	5-Feb-21	10-Feb-21	26-Aug-21	3	1	0	0.00%
No new cVDPV2 cases reported this week. There was one cVDPV2 environmental sample reported in 2020 and one in 2021. The virus is linked to the Banadir outbreak in Somalia. The environmental sample of 22 December 2020, collected from Bouralg, Garissa town, Garissa County showed a cVDPV2 with 65nt changes from Sabin. A case of circulating Vaccine Derived Polio Virus 2 (cVDPV2) has been isolated from a 11-month-old girl in Dagahaley refugee camp, Dadaab Sub County, Garissa County, in epidemiological week 5 (2021), this child was from Somalia, thus, this was an imported case. Another case from Garissa had been detected and another from Mombasa county in week 6.									
Lesotho	COVID-19	Grade 3	13-May-20	13-May-20	26-Aug-21	14 395	14 395	403	2.80%
Since the first confirmed COVID-19 case was reported in Lesotho on 13 May 2020, until 26 Aug 2021, a total of 14 395 cases of COVID-19 have been reported, including 6 830 recoveries and 403 deaths.									
Liberia	COVID-19	Grade 3	16-Mar-20	16-Mar-20	26-Aug-21	5 593	5 593	246	4.40%
From 16 March 2020 to 26 August 2021, a total of 5 593 cases including 246 deaths and 5 234 recoveries have been reported from all 15 counties of Liberia. Montserrado County, which hosts the country's capital city, remains at the epicentre of the outbreak.									
Liberia	Lassa fever	Ungraded	23-Jul-21	1-Jan-21	6-Sep-21	14	14	10	71.40%
The numbers of confirmed and death cases have been reviewed. From January to date, a total of 91 suspected cases were reported, of which 14 (15.3%) were confirmed, and 10 deaths among confirmed cases (CFR=71%). The confirmed cases originated from four counties: namely Bong (4), Grand Bassa (5), Montserrado (1) and Nimba (4). No new confirmed case reported since Epi-Week 30. All 226 contacts have completed 21 days of monitoring. Two counties (Bongo and Montserrado) currently in countdown to end of outbreak; Nimba county outbreak declared over on September 5, 2021									
Liberia	Measles	Ungraded	24-Sep-17	1-Jan-19	24-Jul-21	168	107	0	0.00%
In week 29 (week ending 24 July 2021), 6 suspected cases were reported from Montserrado (5) and Bond (1) Counties. Among the 6 suspected cases, 5 cases are <5 years (83%) and 1 case are >5 years (17%). Since the beginning of 2021, 168 total cases were reported of which 107 were confirmed (16 laboratory-confirmed, 80 clinically confirmed and 11 epi-linked), 57 negative and 2 undetermined.									
Liberia	Poliomyelitis (cVDPV2)	Grade 2	10-Dec-20	17-Dec-20	10-Sep-21	3	3	0	0.00%
No case of circulating vaccine-derived poliovirus type 2 (cVDPV2) was reported this week. The country has reported 3 cases.									
Madagascar	Malnutrition crisis	Grade 2	1-Jul-21	1-Jan-21	9-Sep-21	-	-	-	-
A prolonged three-year drought in southern Madagascar has contributed to food insecurity issues for an estimated 1.3 million people in the Grand Sud area, of which 14K people were classified as IPC Phase 5 or catastrophically food insecure. About 390K children are expected to have moderate acute malnutrition and 111K children to have severe acute malnutrition from May 2021 to April 2022 if no intervention measures are taken. All 10 districts of Grand Sud have been affected with the epicentre of the crisis occurring in Amboasary Atsimo district.									
Madagascar	COVID-19	Grade 3	20-Mar-20	20-Mar-20	2-Sep-21	42 878	42 878	956	2.20%
Madagascar Ministry of Health announced the confirmation of the first COVID-19 case on 20 March 2020. As of 2nd September 2021, a total of 42 878 cases have been reported in the country, out of which 42 586 have recovered and 956 deaths reported.									
Madagascar	Malaria	Ungraded	8-Mar-21	1-Jan-21	25-Jul-21	1 388 136	-	652	0.00%
From January 2021 to 29 August 2021, 1 388 136 cases were reported including 652 deaths. The number of malaria cases reported in week 34 was 5 807 cases and a decrease in the number of malaria cases has been observed from week 21.									

Country	Event	Grade	Date notified to WCO	Start of reporting period	End of reporting period	Total cases	Cases Confirmed	Deaths	CFR
Madagascar	Pneumonic Plague	Grade 1	29-Aug-21	1-Sep-21	6-Sep-21	35	18	11	31.40%
On 29/08/2021, in the Itasy region, in the Arivonimamo health district, an alert was received by the health authorities regarding cases of Pulmonary Plague. As of 6 Sep, a total of 35 suspected cases of pulmonary plague including 18 confirmed and 11 death cases (CFR= 31%) are reported so far. Active case finding, chemo prophylaxis for high-risk contacts of alive and death cases are ongoing; regular meetings of the plague control committees at regional and health district level; mass sensitization activities; contact tracing; Ongoing investigation as well as vector and anti-reservoir control measures, are also ongoing.									
Madagascar	Poliomyelitis (cVDPV1)	Grade 2	28-Apr-21	28-Apr-21	10-Sep-21	8	8	0	0.00%
No case of circulating vaccine-derived poliovirus type 1 (cVDPV1) was reported this week. There are six cases in 2021 and two from 2020.									
Malawi	COVID-19	Grade 3	2-Apr-20	2-Apr-20	12-Sep-21	61 113	61 113	2 238	3.70%
On 2 April 2020, the president of Malawi announced the first confirmed cases of COVID-19 in the country. As of 12 September 2021, the country has a total of 61 113 confirmed cases with 2 238 deaths and 50 384 recoveries.									
Mali	Humanitarian crisis	Protracted 1	n/a	n/a	8-Aug-21	-	-	-	-
The security situation continues to gradually spread to the southern regions of the country. Issues such as inter and intra-community conflicts, activism of non-state armed groups, consequences of counter-insurgency operations, crime and banditry continue to weaken the Malian context. Natural disasters (droughts and floods) and COVID-19 compound the health and non-health impacts affecting all basic social sectors as well as the protection of household livelihoods. On 8 August NSAGs simultaneously attacked villages in of Ouatagouna causing deaths, injuries, and IDPs. There have been a total of 372 266 IDPs in the country and more than 140 000 refugees. According to OCHA reports, an estimated 5.9 million people need humanitarian assistance. During July 2021, more than 50 voluntary Ivorian refugees in Sikasso, Mali were repatriated.									
Mali	COVID-19	Grade 3	25-Mar-20	25-Mar-20	12-Sep-21	14 983	14 983	543	3.60%
On 25 March 2020, the Ministry of Health of Mali reported the first COVID-19 confirmed cases in the country. As of 12 September 2021, a total of 14 983 confirmed COVID-19 cases have been reported in the country including 543 deaths and 14 173 recoveries.									
Mali	Measles	Ungraded	20-Feb-18	1-Jan-21	22-Aug-21	1 212	608	2	0.20%
From January 2021 up to Epi week 33 (22/08/2021), Mali has reported a total of 1 212 suspected cases including two deaths, 1 042 samples tested of which 608 were positive, 407 negative and 30 undetermined. There is an increase of 70.78% in confirmed cases compared to the same week last year.									
Mali	Poliomyelitis (cVDPV2)	Grade 2	18-Aug-20	18-Aug-20	10-Sep-21	51	51	0	0.00%
No case of circulating vaccine-derived poliovirus type 2 (cVDPV2) was reported this week. The total cases reported is 51.									
Mauritania	COVID-19	Grade 3	13-Mar-20	13-Mar-20	11-Sep-21	34 771	34 771	749	2.20%
The government of Mauritania announced its first confirmed COVID-19 case on 13 March 2020. As of 11th September 2021, a total of 34 771 cases including 749 deaths and 32 733 recovered cases have been reported in the country.									
Mauritius	COVID-19	Grade 3	18-Mar-20	18-Mar-20	10-Sep-21	13 289	13 289	43	0.30%
The Republic of Mauritius announced the first three positive cases of COVID-19 on 18 March 2020. As of 10th September 2021, a total of 13 289 confirmed COVID-19 cases including 43 deaths and 9 613 recovered cases have been reported in the country.									
Mozambique	Humanitarian crisis in Cabo Delgado	Protracted 2	1-Jan-20	1-Jan-20	1-Aug-21	-	-	-	-
The safety situation in Cabo Delgado remains unpredictable and volatile. On 8 August 2021, Mocimboa da Praia was retaken by joint forces. During 4-10 August 2021, a total of 5 484 internally displaced person (IDPs) arrived mostly in Mueda (34% arrivals), Nangade (20% arrivals), and Montepuez (20% arrivals) districts. As of 10 August 2021, the nation-wide estimate of people in need of humanitarian assistance is 1.3 million and there are 732K people displaced.									
Mozambique	COVID-19	Grade 3	22-Mar-20	22-Mar-20	12-Sep-21	149 207	149 207	1 892	1.30%
The first COVID-19 confirmed case was reported in Mozambique on 22 March 2020. As of 12th September 2021, a total of 149 207 confirmed COVID-19 cases were reported in the country including 1 892 deaths and 141 392 recoveries.									
Mozambique	Measles	Ungraded	25-Jun-20	1-Jan-21	1-Aug-21	726	84	0	0.00%
Since the beginning of 2021, measles outbreak is active in 11 provinces. As of 01 August 2021 (week 30), there were 726 cases reported including 84 confirmed cases and no death. In 2020 at the same period, there were 130 confirmed cases and no death.									
Namibia	COVID-19	Grade 3	14-Mar-20	14-Mar-20	10-Sep-21	126 290	126 290	3 435	0.00%
The first case of COVID-19 was detected in Namibia on the 14 March 2020. As of 10 September 2021, a total of 126 290 confirmed cases with 121 373 recovered and 3 435 deaths have been reported.									
Namibia	Hepatitis E	Protracted 1	18-Dec-17	8-Sep-17	18-Jul-21	8 081	8 081	66	0.80%
The current outbreak in Namibia started in December 2017. As of 18 July 2021, a cumulative total of 8 081 cases (2 117 laboratory-confirmed, 4 741 epidemiologically linked, and 1 222 suspected cases) including 66 deaths (CFR=0.8%) have been reported countrywide. Khomas Region remains the most affected region, accounting for 4 996 (61.8%) of reported cases, followed by Erongo 1 716 (21.2%).									
Niger	Floods	Ungraded	15-Jul-21	2-Aug-21	6-Sep-21	195 851	-	66	0.00%
As of 6 Sep 2021, heavy rains and floods due to the rising of water of the Niger river caused by the rainy season which extends from June to September each year, have affected 195,851 people across the country's eight regions, destroying over 12,475 houses, flooding hectares of crops and killing 66 people. The government and humanitarian partners are scaling up efforts to address the situation, including building and strengthening protective dykes. Food stock is also being prepositioned in the affected regions. Floods have been followed by outbreaks of cholera across six of the country's eight regions									

Country	Event	Grade	Date notified to WCO	Start of reporting period	End of reporting period	Total cases	Cases Confirmed	Deaths	CFR
Niger	Humanitarian crisis	Protracted 1	1-Feb-15	1-Feb-15	6-Aug-21	-	-	-	-
According to OCHA statistics, 3.8 million people need humanitarian assistance in 2021, 289K are IDPs, 243K are refugees, and 1.6 million are food insecure (phase 3+ and above). The Intikane Malian refugee reception area has closed and many (66%) IDPs from there have resettled in the villages of Temcess, Tillia ville, Gaway, Assaguey in the Tillia department. In the Maradi region, insecurity, theft and looting have cause some population movement. The Maradi region also saw some voluntary returns of IDPs. In Tillaberi region the number of IDPs are expected to drop due to a new government policy of IDP returns. In Diffa region, around 30K people have already returned to their localities of origin due to this return policy.									
Niger	Cholera	Grade 1	7-Aug-21	7-Jun-21	10-Sep-21	3 856	3 856	133	3.40%
As of 10 Sep 2021, a total of 3 856 cases including 133 deaths (CFR = 3.4%) have been reported. The outbreak is linked to the epidemic which is ongoing for several months in the neighbouring regions of northern Nigeria where there is significant mixing of cross-border populations and with heavy rainfall recorded during this period in Niger. Six regions out of eight have reported cases so far (Tahoua, Niamey, Tillaberi, Dosso, Maradi and Zinder). To date 28 out of 72 Health districts have reported cases with 20 health districts currently actives.									
Niger	COVID-19	Grade 3	19-Mar-20	19-Mar-20	28-Aug-21	5 839	5 839	198	3.40%
From 19 March 2020 to 28 August 2021, a total of 5 839 cases with 198 deaths have been reported across the country. A total of 5 517 recoveries have been reported from the country.									
Niger	Measles	Ungraded	10-May-19	1-Jan-21	18-Jul-21	9 095	924	16	0.20%
From January to 18 July 2021, 9 095 suspected cases have been reported and 16 deaths. Out of suspected cases, 1 795 were investigated including 924 lab confirmed measles cases. 55% are older than 4 years; 51 of 72 health districts have reported at least 3 confirmed cases of measles in month. Response vaccination took place in 12 health districts (Arlit, Bilma, Dogondoutchi, Tibiri, Gazaoua, Niamey 2, Niamey 3, Niamey 4, Tahoua Com, Ayerou, Balleyara, Tesker) across 8 regions. In 2020 2 079 cases have been suspected of which 241 lab confirmed (IgM positive) and 4 deaths in 8 regions. In 2019 a total of 10 207 suspected measles cases were reported from eight regions in the country.									
Niger	Meningitis	Ungraded		1-Jan-21	25-Jul-21	1 335	-	74	5.50%
Since the beginning of the year 2021 to week 30 ending 25 July 2021, 1 335 cases have been reported with 75 deaths (CFR 5.5%). Two districts have surpassed the epidemic threshold and six districts are on alert.									
Niger	Poliomyelitis (cVDPV2)	Grade 2	1-Oct-18	1-Oct-18	10-Sep-21	20	20	0	0.00%
No new cases of circulating vaccine-derived poliovirus type 2 (cVDPV2) reported this week. The total cases of 2020 still 10. There number of cVDPV2 cases reported in 2018 has been corrected to 9, and 1 in 2019.									
Nigeria	Humanitarian crisis	Protracted 3	10-Oct-16	n/a	31-Jul-21	-	-	-	-
In 2021, more than 8.7 million require humanitarian assistance in Borno, Adamawa, and Yobe states. Attacks in Nigeria have continued in LGAs of Borno, Adama, and Yobe (BAY) states making the North-Eastern part of the country volatile. As of 31 July 2021, there were 2 191 193 IDPs from these states according to UNHCR. In this area, 92% of IDPs were caused by insurgency, 7% by communal clashes, and 1% by natural disaster. In the North-West part of the country, another 379 316 people have been displaced as of 31 July 2021 and in North-Central area, 316 598 have been displaced.									
Nigeria	Cholera	Grade 2	12-Jan-21	12-Jan-21	4-Aug-21	31 425	-	816	2.60%
As of 4 August 2021, 31 425 have been affected with 816 deaths yielding a CFR of 2.6%. A total of 22 states have reported cases, however, only 8 states have active outbreaks. During week 30 a total of 1 162 suspected cases with 30 deaths were reported - Bauchi (773), Kano (4), Jigawa (13), Katsina (120), FCT (64), Niger (183), Borno (4) and Adamawa (1). Of the reported cases since the beginning of the year, around 27% are aged 5 - 14 years and 51% have been reported among males. There is an ongoing cholera outbreak in 2 regions of the neighbouring country of Niger that have been epidemiologically linked to the outbreak in Nigeria.									
Nigeria	COVID-19	Grade 3	27-Feb-20	27-Feb-20	12-Aug-21	199 151	199 151	2 598	1.30%
The first case of COVID-19 was first detected in Nigeria on the 27 February 2020. As of 12 September 2021, a total of 199 151 confirmed cases with 186 418 recovered and 2 598 deaths have been reported.									
Nigeria	Lassa fever	Ungraded	1-Jan-21	1-Jan-21	6-Aug-21	2 732	354	73	2.70%
Lassa fever is an endemic disease in Nigeria which is reportable through IHR. In week 32 of 2021, the number of new confirmed cases was 4. These were reported from Ondo, Edo, and Enugu States. Cumulatively from week 1 to week 32 of 2021, a total of 354 confirmed cases including 73 deaths among confirmed cases have been reported with a case fatality rate of 20.6% across 14 states. In total, 2 732 cases are suspected in 2021. This is lower than the same period reported in 2020.									
Nigeria	Measles	Ungraded	25-Sep-17	1-Jan-21	20-Apr-21	6 995	-	50	0.70%
In 2020, Nigeria reported 9 316 confirmed cases, with 55 deaths, CFR 0.6%. From January 2021 to 20 April 2021 (as of epi week 15), 6 995 suspected cases have been reported in Nigeria. The most affected state is Borno with 1 992 cases including 32 deaths, 79% of the cases were below the age of five years. During week 15, 537 were reported with 3 deaths									
Nigeria	Poliomyelitis (cVDPV2)	Grade 2	1-Jun-18	1-Jan-18	10-Sep-21	201	201	0	0.00%
18 cases of circulating vaccine-derived poliovirus type 2 (cVDPV2) were reported: nine in Borno, one each in Gombe, Katsina, Taraba and Yobe, two in Jigawa and three in Kano. So far, the number of cases in 2021 is 141 as of 3rd September 2021. There were eight cases reported in 2020 ; 18 cVDPV2 cases reported in 2019 and 34 in 2018.									
Nigeria	Yellow fever	Ungraded	12-Sep-17	1-Jan-21	31-Jul-21	1 082	27	1	0.10%
From 1 January 2021 to 31 July 2021, there has been a cumulative total of 1 082 suspected cases of yellow fever in Nigeria, of which 27 cases have been confirmed, from 367 Local Government Areas (LGA) across 37 states including the Federal Capital Territory (FCT). In 2020, 3 426 suspected cases of yellow fever have been recorded, including 145 confirmed cases, from 495 LGA (64%) across all states and the FCT.									
Rwanda	COVID-19	Grade 3	14-Mar-20	14-Mar-20	12-Sep-21	92 620	92 620	1 172	1.30%
The Rwanda Ministry of Health announced the confirmation of the first COVID-19 case on 14 March 2020. As of 12 September 2021, a total of 92 620 cases with 1 172 deaths and 45 716 recovered cases have been reported in the country.									

Country	Event	Grade	Date notified to WCO	Start of reporting period	End of reporting period	Total cases	Cases Confirmed	Deaths	CFR
Sao Tome and Principe	COVID-19	Grade 3	6-Apr-20	6-Apr-20	12-Sep-21	2 816	2 816	39	1.40%
On 6 April 2020, the Ministry of Health of Sao Tome and Principe reported the country's first case of COVID-19. As of 12 September 2021, a total of 2 816 confirmed cases of COVID-19 have been reported, including 39 deaths. A total of 2 504 cases have been reported as recoveries.									
Senegal	COVID-19	Grade 3	2-Mar-20	2-Mar-20	12-Sep-21	73 478	73 478	1 831	2.50%
From 2 March 2020 to 12 Sep 2021, a total of 73 478 confirmed cases of COVID-19 including 1 831 deaths and 66 925 recoveries have been reported in Senegal.									
Senegal	Poliomyelitis (cVDPV2)	Grade 2		4-Apr-21	10-Sep-21	13	13	0	0.00%
No new case of circulating vaccine-derived poliovirus type 2 (cVDPV2) was reported this week. So far, the total number of cases in 2021 is 13.									
Seychelles	COVID-19	Grade 3	14-Mar-20	14-Mar-20	8-Sep-21	20 593	20 593	106	0.50%
Since the first COVID-19 confirmed cases were reported in Seychelles 14 March 2020, as of 8 Sep 2021 a total of 20 593 cases have been confirmed, including 19 934 recoveries and 106 deaths have been reported.									
Sierra Leone	COVID-19	Grade 3	31-Mar-20	27-Mar-20	10-Sep-21	6 379	6 379	121	1.90%
On 31 March 2020, the President of Sierra Leone reported the first confirmed COVID-19 case in the country. As of 10th September 2021, a total of 6 379 confirmed COVID-19 cases were reported in the country including 121 deaths and 4 373 recovered cases.									
Sierra Leone	Lassa fever	Ungraded	12-Feb-21	1-Jan-21	5-Aug-21	13	13	9	69.20%
As of 5 August 2021, 13 cases of Lassa fever have been reported from Kenema (11) and Kailahun (2) districts since the beginning of 2021. Of these 9 of the cases have died yielding CFR of 69%. Lassa fever is known to be endemic in Sierra Leone and surrounding countries.									
Sierra Leone	Poliomyelitis (cVDPV2)	Grade 2	10-Dec-20	10-Dec-20	21-Aug-21	14	14		0.00%
No new cases of circulating vaccine-derived poliovirus type 2 (cVDPV2) reported this week. So far, 4 cases have been reported in 2021, and the number of cases 2020 remains 10.									
South Africa	COVID-19	Grade 3	5-Mar-20	3-Mar-20	12-Sep-21	2 848 925	2 848 925	84 608	3.40%
Since the start of the COVID-19 pandemic in South Africa by 12th September 2021, a cumulative total of 2 848 925 confirmed cases and 84 608 deaths have been reported with 2 656 534 recoveries.									
South Sudan	Acute Food Insecurity	Grade 2	18-Dec-20	5-Apr-21	15-Aug-21	-	-	-	-
According to the World Food Programme an estimated 7.2 million people faced crisis levels of food insecurity phase (IPC) 3 or worse from April to July 2021- a figure that increased by 25% compared to the previous three months. Of the total number, 108K are in IPC 5, 2.4 are in IPC 4, and 4.6 million are in IPC 3. The total number includes 1.9 million acutely malnourished women and children suffering and 1.47 million internally displaced people. The six most affected counties are Pibor, Akobo, Aweil South, Tonj North, Tonj South and Tonj East.									
South Sudan	Humanitarian crisis	Protracted 3	15-Aug-16	n/a	15-Aug-21	-	-	-	-
The long-standing and complex humanitarian crisis in South Sudan continues. From the start of 2021, there is a total of 8.3 million people in need of humanitarian assistance, 1.6 million people internally displaced and 175 000 people living in protection of civilian sites across the country. According to OCHA, 90K people have been affected by flooding from 1 January - 6 August 2021 in 11 counties including Ayod, Fangak, Renk, Guit, Gogrial West, Aweil South, Mayendit, Koch, Nhaildu Rubkona and Malakal from Fangak.									
South Sudan	COVID-19	Grade 3	5-Apr-20	5-Apr-20	12-Sep-21	11 606	11 606	120	1.00%
On 5 April 2020, the Ministry of Health of South Sudan reported the country's first case of COVID-19. As of 12th September 2021, a total of 11 606 confirmed COVID-19 cases were reported in the country including 120 deaths and 11 195 recovered cases.									
South Sudan	Hepatitis E	Ungraded	3-Jan-18	3-Jan-18	25-Aug-21	1 001	1 001	9	0.90%
The current outbreak in the Bentiu IDP camp, which started at the beginning of 2018, is ongoing. As of 25 Aug 2021, a total of 1 001 cases of hepatitis E including 9 deaths (CFR: 0.9%) have been reported. Hepatitis E cases have been above the epidemic threshold since week 19 of 2021 which has been mostly attributed to declining water, sanitation and hygiene services in the camp due to reduced funding.									
South Sudan	Measles	Ungraded	24-Nov-18	19-Sep-19	18-Aug-21	1 313	54	2	0.20%
Since week 38 of 2019 to 24 July 2021 (week 30 of 2021), a total of 1 313 cases of measles were reported including 52 confirmed cases and two deaths. The outbreak is controlled in 9 counties (Tonj East, Juba, Bor, Kapoeta East, Jebel Boma, Aweil East, Wau, Pibor and Ibba). No county has reported outbreak in 2021.									
South Sudan	Poliomyelitis (cVDPV2)	Grade 2	22-Oct-20	22-Oct-20	10-Sep-21	59	59	0	0.00%
no case of circulating vaccine-derived poliovirus type 2 (cVDPV2) was reported this week. There are 59 cVDPV2 cases in the country; 9 in 2021 and 50 in 2020.									
Tanzania, United Republic of	COVID-19	Grade 3	16-Mar-20	16-Mar-20	6-Aug-21	1 367	1 367	50	3.70%
The Ministry of Health, Community Health, Community Development, Gender, Elderly and Children in Tanzania reported the country's first case of COVID-19 on 16 March 2020. As of 22 July 2021, a total of 1 367 cases have been reported in the country including 50 deaths. A new bunch of 100 COVID-19 cases was reported in Tanzania on 28 June 2021 since May 2020.									
Togo	COVID-19	Grade 3	6-Mar-20	1-Mar-20	11-Sep-21	23 618	23 618	205	0.90%
On 6 March 2020, the Ministry of Health and Public Hygiene of Togo announced the confirmation of its first case of COVID-19. As of 11 September 2021, a total of 23 618 cases including 205 deaths and 18 512 recovered cases have been reported in the country.									

Country	Event	Grade	Date notified to WCO	Start of reporting period	End of reporting period	Total cases	Cases Confirmed	Deaths	CFR
Togo	Poliomyelitis (cVDPV2)	Grade 2	18-Oct-19	13-Sep-19	10-Sep-21	17	17	0	0.00%
No new case of cVDPV2 was reported during the past week. There were nine cases in 2020 while the total number of cVDPV2 cases reported in 2019 remains eight.									
Uganda	COVID-19	Grade 3	21-Mar-20	21-Mar-20	27-Aug-21	99 225	119 825	3 006	3.00%
The first COVID-19 confirmed case was reported in Uganda on 21 March 2020. As of 28 August 2021, a total of 119 825 confirmed COVID-19 cases, 95 507 recoveries with 3 006 deaths.									
Zambia	COVID-19	Grade 3	18-Mar-20	18-Mar-20	12-Sep-21	207 938	207 938	3 631	1.70%
The first COVID-19 confirmed case was reported in Zambia on 18 March 2020. As of 12th September 2021, a total of 207 938 confirmed COVID-19 cases were reported in the country including 3 631 deaths and 203 342 recovered cases.									
Zimbabwe	Anthrax	Ungraded	6-May-19	6-May-19	25-Jul-21	835	0	3	0.40%
The anthrax outbreak is ongoing in Zimbabwe. From Week 1 to 29 of 2021, there were 88 cases reported and no deaths. This outbreak started in Week 36 of 2019, affecting mainly Buhera and Gokwe North and South districts but a surge in cases started appearing in week 38 when cases were reported in some other areas. The cumulative figures for anthrax are 747 cases and 3 deaths in 2020. The last five reported cases were reported in Gokwe North District in Midlands Province during Week 28 of 2021.									
Zimbabwe	COVID-19	Grade 3	20-Mar-20	20-Mar-20	12-Sep-21	126 269	126 269	4 538	3.60%
The first COVID-19 confirmed case was reported in Zimbabwe on 20 March 2020. As of 12th September 2021, a total of 126 269 confirmed COVID-19 cases were reported in the country including 4 538 deaths and 118 792 cases that recovered.									

†Grading is an internal WHO process, based on the Emergency Response Framework. For further information, please see the Emergency Response Framework: <http://www.who.int/hac/about/erf/en/>.

Data are taken from the most recently available situation reports sent to WHO AFRO. Numbers are subject to change as the situations are dynamic.

© WHO Regional Office for Africa

This is not an official publication of the World Health Organization.

Correspondence on this publication may be directed to:

Dr Mary Stephen

Programme Area Manager, Health Information & Risk Assessment. ai

WHO Emergency Preparedness and Response

WHO Regional Office for Africa

P O Box. 06 Cité du Djoué, Brazzaville, Congo

Email: afrooutbreak@who.int

Requests for permission to reproduce or translate this publication – whether for sale or for non-commercial distribution – should be sent to the same address.

The designations employed and the presentation of the material in this publication do not imply the expression of any opinion whatsoever on the part of the World Health Organization concerning the legal status of any country, territory, city or area or of its authorities, or concerning the delimitation of its frontiers or boundaries. Dotted lines on maps represent approximate borderlines for which there may not yet be full agreement.

All reasonable precautions have been taken by the World Health Organization to verify the information contained in this publication. However, the published material is being distributed without warranty of any kind, either express or implied. The responsibility for the interpretation and use of the material lies with the reader. In no event shall the World Health Organization or its Regional Office for Africa be liable for damages arising from its use.

Contributors

Charlotte FATY NDIAYE (Madagascar)
Konate Bintou (Madagascar)
Geoffrey Namara (Nigeria)
Rex Gadama MPAZANJE (Nigeria)

Graphic design

A. Moussongo

Editorial Team

M. Stephen
C. Okot
V. Mize
G. Williams
J. Kimenyi
E. Kibangou
O. Ogundiran
T. Lee
F. Kambale
J. Nguna

Production Team

A. Bukhari
T. Mlanda
R. Ngom
F. Moussana

Editorial Advisory Group

Dr. Salam Gueye, *Regional Emergency Director*
M. Stephen
A. Talisuna
A. Fortin

Data sources

Data and information is provided by Member States through WHO Country Offices via regular situation reports, teleconferences and email exchanges. Situations are evolving and dynamic therefore numbers stated are subject to change.